

Sockets-Outlets Low Voltage protected 90°

Surface Mounting IP44 50-60Hz

Description: A range of removable type trailing and fixed sockets for industrial use, compliant with dimensional and performance standards unified on an international level (IEC 60309) and assimilated by European Standards (EN 60309) and Italian Standards (CEI 23-12). Equipped with an extra pilot contact (CP) for executing the electrical interlock on plug and socket versions with nominal current 63 and 125A. Elastic sockets obtained from bar in solid brass type Pt. CuZn40Pb2 (Cu 58%, Zn 40%, Pb 2%); antiloosening terminal with unloosable screws, cable clamp incorporated with anti-abrasion cable glands.

Materials: The parts in insulating material are made of self-extinguishing thermoplastic polymers, with high dimensional stability, resistant to chemical and atmospheric agents. Sockets are in brass. The socket lid closing springs are in stainless steel.

Application: Suitable only for temporary, trailing installations and connections, and not for permanent applications. Furthermore, the range cannot be used in areas with a fire hazard.

Accessories supplied: Ø 20 mm cable gland for 16 A versions, Ø 23mm cable gland for 32 A versions.



Rated Current: 16A

Part Number	No of Poles	Nominal Voltage	Colour	Reference h	Package (pcs/package)
101679	2P+E	110 V	Yellow	4	10
101690	3P+E	110 V	Yellow	4	10
101701	3P+N+E	110 V	Yellow	4	10
101712	2P+E	230 V	Blue	6	10
101723	3P+E	230 V	Blue	9	10
101734	3P+N+E	230 V	Blue	9	10
101745	2P+E	400 V	Red	9	10
101756	3P+E	400 V	Red	6	10
101767	3P+N+E	400 V	Red	6	10
101778	3P+E	500 V	Black	7	10
101789	3P+N+E	500 V	Black	7	10

Rated Current: 32A

Part Number	No of Poles	Nominal Voltage	Colour	Reference h	Package (pcs/package)
101800	2P+E	110 V	Yellow	4	8
101811	3P+E	110 V	Yellow	4	8
101822	3P+N+E	110 V	Yellow	4	8
101833	2P+E	230 V	Blue	6	8
101844	3P+E	230 V	Blue	9	8
101855	3P+N+E	230 V	Blue	9	8
101866	2P+E	400 V	Red	9	8
101877	3P+E	400 V	Red	6	8
101888	3P+N+E	400 V	Red	6	8
101899	3P+E	500 V	Black	7	8
101910	3P+N+E	500 V	Black	7	8

Sockets-Outlets Low Voltage watertight 90°

Surface Mounting IP67 50-60Hz

Description: A range of removable type trailing and fixed sockets for industrial use, compliant with dimensional and performance standards unified on an international level (IEC 60309) and assimilated by European Standards (EN 60309) and Italian Standards (CEI 23-12). Equipped with an extra pilot contact (CP) for executing the electrical interlock on plug and socket versions with nominal current 63 and 125A. Elastic sockets obtained from bar in solid brass type Pt. CuZn40Pb2 (Cu 58%, Zn 40%, Pb 2%); antiloosening terminal with unloosable screws, cable clamp incorporated with anti-abrasion cable glands.

Materials: The parts in insulating material are made of self-extinguishing thermoplastic polymers, with high dimensional stability, resistant to chemical and atmospheric agents. Sockets are in brass. The socket lid closing springs are in stainless steel.

Application: Suitable only for temporary, trailing installations and connections, and not for permanent applications. Furthermore, the range cannot be used in areas with a fire hazard.

Accessories supplied: Cable gland Pg 21.



Rated Current: 16A

Part Number	No of Poles	Nominal Voltage	Colour	Reference h	Package (pcs/package)
101921	2P+E	110 V	Yellow	4	10
101932	3P+E	110 V	Yellow	4	10
101943	3P+N+E	110 V	Yellow	4	10
101954	2P+E	230 V	Blue	6	10
101965	3P+E	230 V	Blue	9	10
101976	3P+N+E	230 V	Blue	9	10
101987	2P+E	400 V	Red	9	10
101998	3P+E	400 V	Red	6	10
102009	3P+N+E	400 V	Red	6	10
102020	3P+E	500 V	Black	7	10
102031	3P+N+E	500 V	Black	7	10

Rated Current: 32A

Part Number	No of Poles	Nominal Voltage	Colour	Reference h	Package (pcs/package)
102042	2P+E	110 V	Yellow	4	8
102053	3P+E	110 V	Yellow	4	8
102064	3P+N+E	110 V	Yellow	4	8
102075	2P+E	230 V	Blue	6	8
102086	3P+E	230 V	Blue	9	8
102097	3P+N+E	230 V	Blue	9	8
102108	2P+E	400 V	Red	9	8
102119	3P+E	400 V	Red	6	8
102130	3P+N+E	400 V	Red	6	8
102141	3P+E	500 V	Black	7	8
102152	3P+N+E	500 V	Black	7	8
102163	3P+E	380 - 440 V	Red	3	8

(continue at next page)

Sockets-Outlets Low Voltage watertight 90°
Surface Mounting IP67

(continue from previous page)

Rated Current: 63A

Part Number	No of Poles	Nominal Voltage	Colour	Reference h	Package (pcs/pack)
102174	2P+E	110 V	Yellow	4	2
102185	3P+E	110 V	Yellow	4	2
102196	3P+N+E	110 V	Yellow	4	2
102207	2P+E	230 V	Blue	6	2
102218	3P+E	230 V	Blue	9	2
102229	3P+N+E	230 V	Blue	9	2
102240	2P+E	400 V	Red	9	2
102251	3P+E	400 V	Red	6	2
102262	3P+N+E	400 V	Red	6	2
102273	3P+E	500 V	Black	7	2
102284	3P+N+E	500 V	Black	7	2

Rated Current: 125A

Part Number	No of Poles	Nominal Voltage	Colour	Reference h	Package (pcs/pack)
102295	3P+E	110 V	Yellow	4	1
102306	3P+N+E	110 V	Yellow	4	1
102317	3P+E	230 V	Blue	9	1
102328	3P+N+E	230 V	Blue	9	1
102339	3P+E	400 V	Red	6	1
102350	3P+N+E	400 V	Red	6	1
102361	3P+E	500 V	Black	7	1
102372	3P+N+E	500 V	Black	7	1

Sockets-Outlets Extra Low Voltage protected 90°

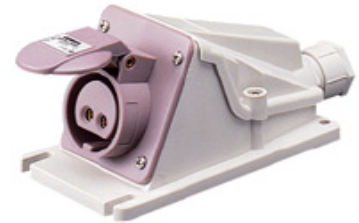
Surface Mounting

Description: A range of removable type trailing and fixed sockets for industrial use, compliant with dimensional and performance standards unified on an international level (IEC 60309) and assimilated by European Standards (EN 60309) and Italian Standards (CEI 23-12). Equipped with an extra pilot contact (CP) for executing the electrical interlock on plug and socket versions with nominal current 63 and 125A. Elastic sockets obtained from bar in solid brass type Pt. CuZn40Pb2 (Cu 58%, Zn 40%, Pb 2%); antiloosening terminal with unloosable screws, cable clamp incorporated with anti-abrasion cable glands.

Materials: The parts in insulating material are made of self-extinguishing thermoplastic polymers, with high dimensional stability, resistant to chemical and atmospheric agents. Sockets are in brass. The socket lid closing springs are in stainless steel.

Application: Suitable only for temporary, trailing installations and connections, and not for permanent applications. Furthermore, the range cannot be used in areas with a fire hazard.

Accessories supplied: Ø 23 mm cable gland



Rated Current: 16A

Part Number	No of Poles	Nominal Voltage	Colour	Frequency Hz	Reference h	Package (pcs/pack)
102383	2P	24 V	Violet	50 - 60 Hz	n.r.	10
102394	3P	24 V	Violet	50 - 60 Hz	n.r.	10
102405	2P	42 V	White	50 - 60 Hz	12	10
102416	3P	42 V	White	50 - 60 Hz	12	10
102427	2P	24 - 42 V	Green	100 - 200 Hz	4	10
102438	3P	24 - 42 V	Green	100 - 200 Hz	4	10
102449	2P	24 - 42 V	Green	401 - 500 Hz	11	10
102460	3P	24 - 42 V	Green	401 - 500 Hz	11	10
102471	2P	24 - 42 V	White	d.c.	10	10

Rated Current: 32A

Part Number	No of Poles	Nominal Voltage	Colour	Frequency Hz	Reference h	Package (pcs/pack)
102482	2P	24 V	Violet	50 - 60 Hz	n.r.	10
102493	3P	24 V	Violet	50 - 60 Hz	n.r.	10
102504	2P	42 V	White	50 - 60 Hz	12	10
102515	3P	42 V	White	50 - 60 Hz	12	10
102526	2P	24 - 42 V	Green	100 - 200 Hz	4	10
102537	3P	24 - 42 V	Green	100 - 200 Hz	4	10
102548	2P	24 - 42 V	Green	401 - 500 Hz	11	10
102559	3P	24 - 42 V	Green	401 - 500 Hz	11	10
102570	2P	24 - 42 V	White	d.c.	10	10

Sockets-Outlets Vertical Fixed Interlocked

Watertight IP55 with rotary switch

Description: Industrial type socket-outlets conforming to IEC 309 Standard, with mechanical interlock consisting of a circuit breaker enabling the plug to be connected and disconnected only in the open position and the switch to close only with the plug inserted.

Materials: The parts in insulating material are made of self-extinguishing thermoplastic polymers, with high dimensional stability, resistant to chemical and atmospheric agents. Sockets are in brass. The socket lid closing springs are in stainless steel.

Application: High application versatility thanks to the possibility of assembly in back-mounting and flush-mounting boxes, modular bases and boards of the 68 Q-BOX, Q-DIN and Q-MC range.

Accessories supplied: 4 Ø 25mm insulating screwcaps, cable gland Pg 29 for 16/32A versions, cable gland Pg 36 for 63A versions.



Rated Current: 16A

Part Number	No of Poles	Nominal Voltage	Colour	Reference h	Package (pcs/pack)
102581	2P+E	110 V	Yellow	4	1
102592	3P+E	110 V	Yellow	4	1
102603	3P+N+E	110 V	Yellow	4	1
102614	2P+E	230 V	Blue	6	1
102625	3P+E	230 V	Blue	9	1
102636	3P+N+E	230 V	Blue	9	1
102647	2P+E	400 V	Red	9	1
102658	3P+E	400 V	Red	6	1
102669	3P+N+E	400 V	Red	6	1
102680	3P+E	500 V	Black	7	1
102691	3P+N+E	500 V	Black	7	1

Rated Current: 32A

Part Number	No of Poles	Nominal Voltage	Colour	Reference h	Package (pcs/pack)
102702	2P+E	110 V	Yellow	4	1
102713	3P+E	110 V	Yellow	4	1
102724	3P+N+E	110 V	Yellow	4	1
102735	2P+E	230 V	Blue	6	1
102746	3P+E	230 V	Blue	9	1
102757	3P+N+E	230 V	Blue	9	1
102768	2P+E	400 V	Red	9	1
102779	3P+E	400 V	Red	6	1
102790	3P+N+E	400 V	Red	6	1
102801	3P+E	500 V	Black	7	1
102812	3P+N+E	500 V	Black	7	1
102823	3P+E	380 - 440 V	Red	3	1

(continue at next page)

Sockets-Outlets Vertical Fixed Interlocked
Watertight IP55 with rotary switch
(continue from previous page)
Rated Current: 63A

Part Number	No of Poles	Nominal Voltage	Colour	Reference h	Package (pcs/pack)
102834	2P+E	110 V	Yellow	4	1
102845	3P+E	110 V	Yellow	4	1
102856	3P+N+E	110 V	Yellow	4	1
102867	2P+E	230 V	Blue	6	1
102878	3P+E	230 V	Blue	9	1
102889	3P+N+E	230 V	Blue	9	1
102900	2P+E	400 V	Red	9	1
102911	3P+E	400 V	Red	6	1
102922	3P+N+E	400 V	Red	6	1
102933	3P+E	500 V	Black	7	1
102944	3P+N+E	500 V	Black	7	1

Standard Plugs Low Voltage trailing protected 50/60Hz IP44

Description: A range of removable type trailing and fixed plugs for industrial use, compliant with dimensional and performance standards unified on an international level (IEC 60309) and assimilated by European Standards (EN 60309) and Italian Standards (CEI 23-12). Equipped with an extra pilot contact (CP) for executing the electrical interlock on plug and socket versions with nominal current 63 and 125A. Elastic plugs obtained from bar in solid brass type Pt. CuZn40Pb2 (Cu 58%, Zn 40%, Pb 2%); antiloosening terminal with unloosable screws, cable clamp incorporated with anti-abrasion cable glands.



Materials: The parts in insulating material are made of self-extinguishing thermoplastic polymers, with high dimensional stability, resistant to chemical and atmospheric agents. Sockets and plugs are in brass. The plugs are nickel-plated for better abrasion and corrosion resistance.

Application: Suitable only for temporary, trailing installations and connections, and not for permanent applications. Furthermore, the range cannot be used in areas with a fire hazard.

Rated Current: 16A

Part Number	No of Poles	Nominal Voltage	Colour	Reference h	Package (pcs/pack)
102955	2P+E	110 V	Yellow	4	10
102966	3P+E	110 V	Yellow	4	10
102977	3P+N+E	110 V	Yellow	4	10
102988	2P+E	230 V	Blue	6	10
102999	3P+E	230 V	Blue	9	10
103010	3P+N+E	230 V	Blue	9	10
103021	2P+E	400 V	Red	9	10
103032	3P+E	400 V	Red	6	10
103043	3P+N+E	400 V	Red	6	10
103054	3P+E	500 V	Black	7	10
103065	3P+N+E	500 V	Black	7	10

Rated Current: 32A

Part Number	No of Poles	Nominal Voltage	Colour	Reference h	Package (pcs/pack)
103076	2P+E	110 V	Yellow	4	8
103087	3P+E	110 V	Yellow	4	8
103098	3P+N+E	110 V	Yellow	4	8
103109	2P+E	230 V	Blue	6	8
103120	3P+E	230 V	Blue	9	8
103131	3P+N+E	230 V	Blue	9	8
103142	2P+E	400 V	Red	9	8
103153	3P+E	400 V	Red	6	8
103164	3P+N+E	400 V	Red	6	8
103175	3P+E	500 V	Black	7	8
103186	3P+N+E	500 V	Black	7	8

Standard Plugs Low Voltage Quick mounting&wiring protected 50/60Hz IP44

Description: A range of removable type trailing and fixed plugs for industrial use, compliant with dimensional and performance standards unified on an international level (IEC 60309) and assimilated by European Standards (EN 60309) and Italian Standards (CEI 23-12). Equipped with an extra pilot contact (CP) for executing the electrical interlock on plug and socket versions with nominal current 63 and 125A. Elastic plugs obtained from bar in solid brass type Pt. CuZn40Pb2 (Cu 58%, Zn 40%, Pb 2%); antiloosening terminal with unloosable screws, cable clamp incorporated with anti-abrasion cable glands.

Materials: The parts in insulating material are made of self-extinguishing thermoplastic polymers, with high dimensional stability, resistant to chemical and atmospheric agents. Sockets and plugs are in brass. The plugs are nickel-plated for better abrasion and corrosion resistance.

Application: Suitable only for temporary, trailing installations and connections, and not for permanent applications. Furthermore, the range cannot be used in areas with a fire hazard.


Rated Current: 16A

Part Number	No of Poles	Nominal Voltage	Colour	Reference h	Package (pcs/pack)
103197	2P+E	110 V	Yellow	4	40
103208	3P+E	110 V	Yellow	4	20
103219	3P+N+E	110 V	Yellow	4	16
103230	2P+E	230 V	Blue	6	40
103241	3P+E	230 V	Blue	9	40
103252	3P+N+E	230 V	Blue	9	16
103263	2P+E	400 V	Red	9	20
103274	3P+E	400 V	Red	6	40
103285	3P+N+E	400 V	Red	6	32
103296	3P+E	500 V	Black	7	20
103307	3P+N+E	500 V	Black	7	16

Standard Plugs Low Voltage trailing watertight 50/60Hz IP67

Description: A range of removable type trailing and fixed plugs for industrial use, compliant with dimensional and performance standards unified on an international level (IEC 60309) and assimilated by European Standards (EN 60309) and Italian Standards (CEI 23-12). Equipped with an extra pilot contact (CP) for executing the electrical interlock on plug and socket versions with nominal current 63 and 125A. Elastic plugs obtained from bar in solid brass type Pt. CuZn40Pb2 (Cu 58%, Zn 40%, Pb 2%); antiloosening terminal with unloosable screws, cable clamp incorporated with anti-abrasion cable glands.



Materials: The parts in insulating material are made of self-extinguishing thermoplastic polymers, with high dimensional stability, resistant to chemical and atmospheric agents. Sockets and plugs are in brass. The plugs are nickel-plated for better abrasion and corrosion resistance.

Application: Suitable only for temporary, trailing installations and connections, and not for permanent applications. Furthermore, the range cannot be used in areas with a fire hazard.

Rated Current: 16A

Part Number	No of Poles	Nominal Voltage	Colour	Reference h	Package (pcs/pack)
103318	2P+E	110 V	Yellow	4	10
103329	3P+E	110 V	Yellow	4	10
103340	3P+N+E	110 V	Yellow	4	10
103351	2P+E	230 V	Blue	6	10
103362	3P+E	230 V	Blue	9	10
103373	3P+N+E	230 V	Blue	9	10
103384	2P+E	400 V	Red	9	10
103395	3P+E	400 V	Red	6	10
103406	3P+N+E	400 V	Red	6	10
103417	3P+E	500 V	Black	7	10
103428	3P+N+E	500 V	Black	7	10

Rated Current: 32A

Part Number	No of Poles	Nominal Voltage	Colour	Reference h	Package (pcs/pack)
103439	2P+E	110 V	Yellow	4	8
103450	3P+E	110 V	Yellow	4	8
103461	3P+N+E	110 V	Yellow	4	8
103472	2P+E	230 V	Blue	6	8
103483	3P+E	230 V	Blue	9	8
103494	3P+N+E	230 V	Blue	9	8
103505	2P+E	400 V	Red	9	8
103516	3P+E	400 V	Red	6	8
103527	3P+N+E	400 V	Red	6	8
103538	3P+E	500 V	Black	7	8
103549	3P+N+E	500 V	Black	7	8
103560	3P+E	380-440 V	Red	3	8

(continue to next page)

Standard Plugs Low Voltage trailing watertight 50/60Hz IP67
(continue from previous page)
Rated Current: 63A

Part Number	No of Poles	Nominal Voltage	Colour	Reference h	Package (pcs/pack)
103571	2P+E	110 V	Yellow	4	2
103582	3P+E	110 V	Yellow	4	2
103593	3P+N+E	110 V	Yellow	4	2
103604	2P+E	230 V	Blue	6	2
103615	3P+E	230 V	Blue	9	2
103626	3P+N+E	230 V	Blue	9	2
103637	2P+E	400 V	Red	9	2
103648	3P+E	400 V	Red	6	2
103659	3P+N+E	400 V	Red	6	2
103670	3P+E	500 V	Black	7	2
103681	3P+N+E	500 V	Black	7	2

Rated Current: 125A

Part Number	No of Poles	Nominal Voltage	Colour	Reference h	Package (pcs/pack)
103692	3P+E	110 V	Yellow	4	1
103703	3P+N+E	110 V	Yellow	4	1
103714	3P+E	230 V	Blue	9	1
103725	3P+N+E	230 V	Blue	9	1
103736	3P+E	400 V	Red	6	1
103747	3P+N+E	400 V	Red	6	1
103758	3P+E	500 V	Black	7	1
103769	3P+N+E	500 V	Black	7	1

Standard Connectors Low Voltage trailing protected 50/60Hz IP44

Description: A range of removable type trailing and fixed plugs for industrial use, compliant with dimensional and performance standards unified on an international level (IEC 60309) and assimilated by European Standards (EN 60309) and Italian Standards (CEI 23-12). Equipped with an extra pilot contact (CP) for executing the electrical interlock on plug and socket versions with nominal current 63 and 125A. Elastic plugs obtained from bar in solid brass type Pt. CuZn40Pb2 (Cu 58%, Zn 40%, Pb 2%); antiloosening terminal with unloosable screws, cable clamp incorporated with anti-abrasion cable glands.



Materials: The parts in insulating material are made of self-extinguishing thermoplastic polymers, with high dimensional stability, resistant to chemical and atmospheric agents. Sockets and plugs are in brass. The plugs are nickel-plated for better abrasion and corrosion resistance.

Application: Suitable only for temporary, trailing installations and connections, and not for permanent applications. Furthermore, the range cannot be used in areas with a fire hazard.

Rated Current: 16A

Part Number	No of Poles	Nominal Voltage	Colour	Reference h	Package (pcs/pack)
103780	2P+E	110 V	Yellow	4	10
103791	3P+E	110 V	Yellow	4	10
103802	3P+N+E	110 V	Yellow	4	10
103813	2P+E	230 V	Blue	6	10
103824	3P+E	230 V	Blue	9	10
103835	3P+N+E	230 V	Blue	9	10
103846	2P+E	400 V	Red	9	10
103857	3P+E	400 V	Red	6	10
103868	3P+N+E	400 V	Red	6	10
103879	3P+E	500 V	Black	7	10
103890	3P+N+E	500 V	Black	7	10

Rated Current: 32A

Part Number	No of Poles	Nominal Voltage	Colour	Reference h	Package (pcs/pack)
103901	2P+E	110 V	Yellow	4	8
103912	3P+E	110 V	Yellow	4	8
103923	3P+N+E	110 V	Yellow	4	8
103934	2P+E	230 V	Blue	6	8
103945	3P+E	230 V	Blue	9	8
103956	3P+N+E	230 V	Blue	9	8
103967	2P+E	400 V	Red	9	8
103978	3P+E	400 V	Red	6	8
103989	3P+N+E	400 V	Red	6	8
104000	3P+E	500 V	Black	7	8
104011	3P+N+E	500 V	Black	7	8

Standard Connectors Low Voltage Quick mounting & wiring watertight - 50/60Hz IP67

Description: A range of removable type trailing and fixed plugs for industrial use, compliant with dimensional and performance standards unified on an international level (IEC 60309) and assimilated by European Standards (EN 60309) and Italian Standards (CEI 23-12). Equipped with an extra pilot contact (CP) for executing the electrical interlock on plug and socket versions with nominal current 63 and 125A. Elastic plugs obtained from bar in solid brass type Pt. CuZn40Pb2 (Cu 58%, Zn 40%, Pb 2%); antiloosening terminal with unloosable screws, cable clamp incorporated with anti-abrasion cable glands.



Materials: The parts in insulating material are made of self-extinguishing thermoplastic polymers, with high dimensional stability, resistant to chemical and atmospheric agents. Sockets and plugs are in brass. The plugs are nickel-plated for better abrasion and corrosion resistance.

Application: Suitable only for temporary, trailing installations and connections, and not for permanent applications. Furthermore, the range cannot be used in areas with a fire hazard.

Rated Current: 16A

Part Number	No of Poles	Nominal Voltage	Colour	Reference h	Package (pcs/pack)
104022	2P+E	110 V	Yellow	4	16
104033	3P+E	110 V	Yellow	4	12
104044	3P+N+E	110 V	Yellow	4	12
104055	2P+E	230 V	Blue	6	32
104066	3P+E	230 V	Blue	9	12
104077	3P+N+E	230 V	Blue	9	12
104088	2P+E	400 V	Red	9	16
104099	3P+E	400 V	Red	6	24
104110	3P+N+E	400 V	Red	6	24
104121	3P+E	500 V	Black	7	12
104132	3P+N+E	500 V	Black	7	12

Multi-socket plug,schuko

Description	Package (pcs/pack)
2 outputs (T)	200
3 outputs (+)	200


Plug,schuko plastic-Heavy Duty

Description	Package (pcs/pack)
G1Z3R male white	100
G2N1 female white	100


Plug,schuko plastic

Description	Package (pcs/pack)
male white	100
male black	100
female white	50
female black	50


Plug,schuko,cable on the side

Description	Package (pcs/pack)
male (white-black)	100


Rubber plugs & sockets IP45

Part Number	Description
104143	plug 16A
104154	plug 16A
104165	socket 16A with cover

