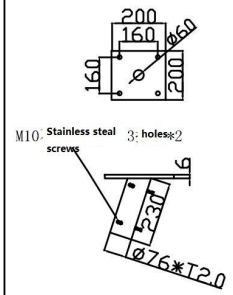
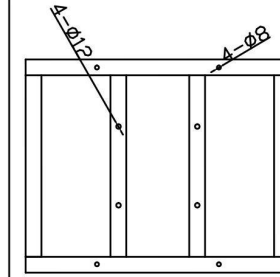
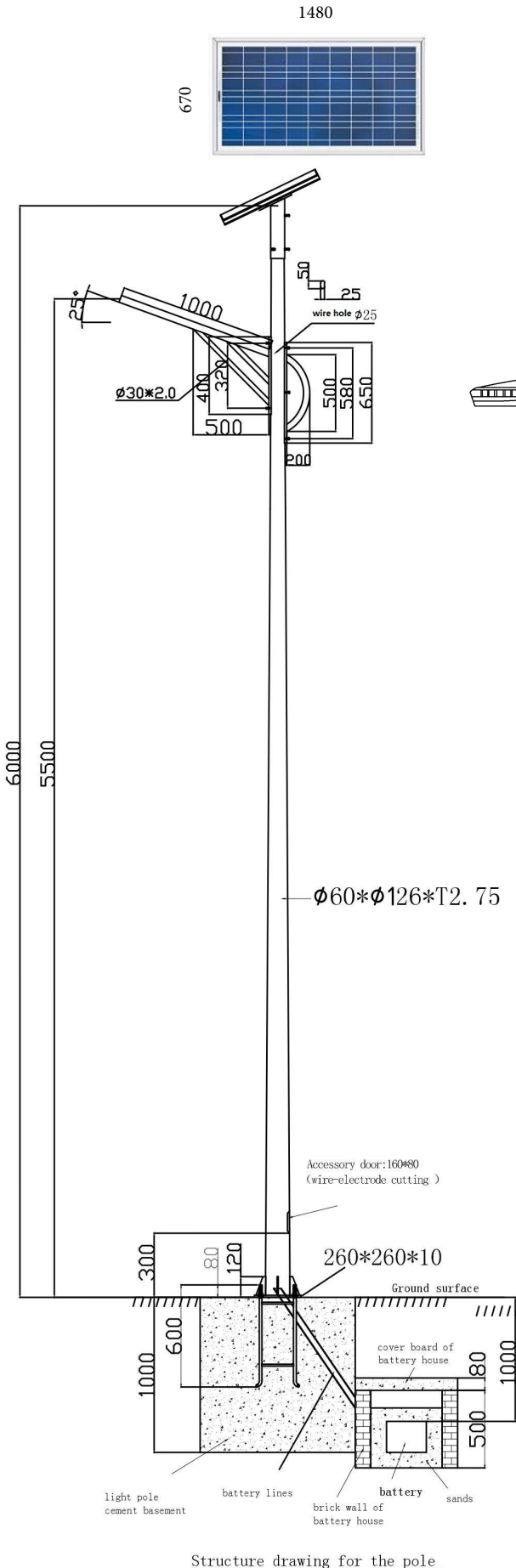
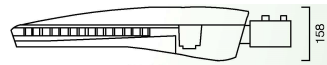


MODEL: AIO-SST-02

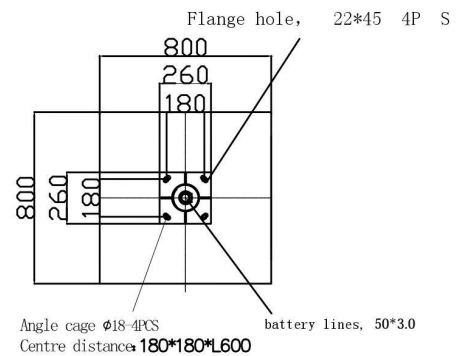


steering head



Note:

- The sizes in the drawing is for your reference, subject to the real product.
- Pole material: Q235 high quality carbon steel
- Lamp arm/ fringe material: High quality low carbon steel.
- Technical requirements:
 - All soldering must be well done.
 - HDG of pole, and plastic coating must be done in 1 time.
 - All nuts / screws should be SS.
- Durable Silicone Rubber Gasket
- Clear tempered glass lens
- Integral Control Gear
- Solar Panel Consist of Poly Crystalline High Efficiency Cell
- Sealed - Lead Acid Battery 12V
- Solar Charger Controller with DC Load 12/24V, 10A
- Illumination Time Approximate Hrs from Sunset
- 2 Day Sun Autonomy

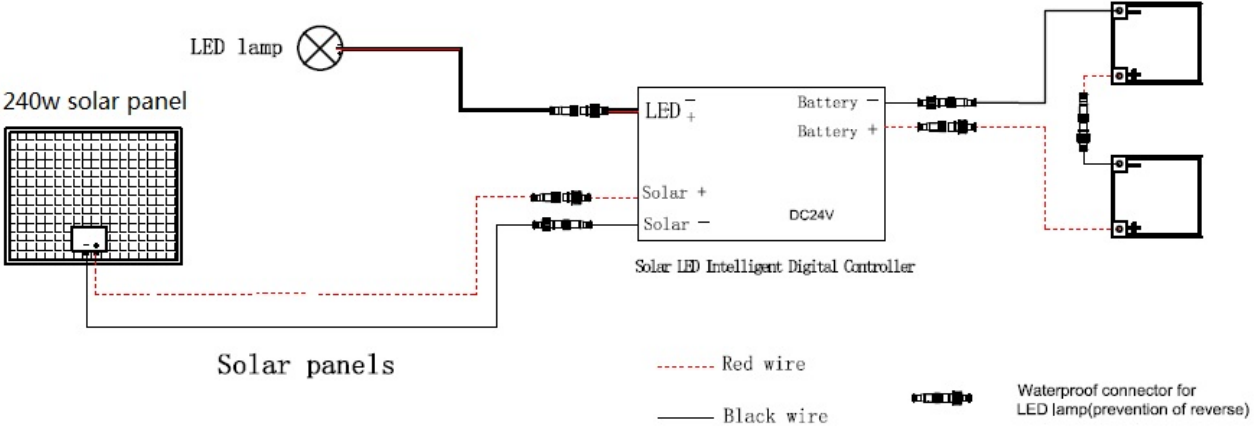


Top view of battery house

文件编号 Document No.	AIO-Pole Drawing-20160804				零件名称 Design	6m Street Light	Material Carbon Steel
标识 Mark	处数 Qty	更改文件号 ECN ND.	签名 Sign	更改日期 Date	核准	Ethan	产品型号 零件编号
							0010
比例 Scale	重要尺寸 Main Dim	单位 Unit	表面处理 Finish	公差 Tol	发行日期 Issue Date	批准	第三角画法 The Third Angle

CONNECTION DIAGRAM

System wiring drawing(Wiring order: 1.Connect illuminant wire 2.Connect battery wire 3.Connect solar panel wire)



Integrated. Intelligent. Innovative

MODEL: AIO-SST-02



Guide to Solar LED Outdoor Lighting System

Solar power assemblies from
AIO Solar

Integrated. Intelligent. Innovative

Installation Instruction of Solar LED Lighting System

Foundation Preparation:

Note: Place the sample plate directly on the 4 poles. Ensure no deformation of the poles occurs.



Sample plate



Note: The arrow indicated below is the direction of light being projected. Please ensure the direction of the base is correct.



Note: Before pouring the concrete, place plastic bags on each of the four poles to avoid cement stains splashing onto the poles. The poles should be above ground level at a minimum of 15cm-20cm.



Integrated. Intelligent. Innovative

- 1. Suggested Foundation : 80cm x 80cm x 80cm
Screw poles must be above ground level at a minimum of 15cm-20cm



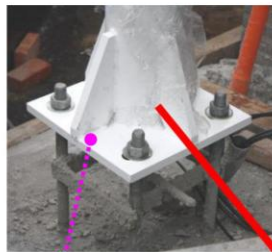
※Note: The poles must be firmly balanced

Integrated. Intelligent. Innovative

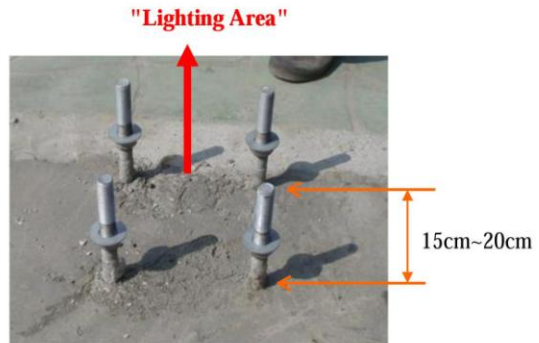
2. Suggested minimum installation range: 100cm away from the main roads.



Note: The base foundation must be parallel on even surface to the main road and ensure the light projection onto the road is correct before installation.



Frame Base



Lighting area

Integrated. Intelligent. Innovative

3. If the sample plate cannot be placed onto the four poles, then the base frame of the poles is either damaged or deformed. Please place a nut on each of the poles and use a mallet to gently adjust the poles until the sample plate can be placed correctly on all four poles.

Note: Do not directly use the mallet to hit the pole.



Place the nut and adjust pole with mallet



Place the nut and adjust pole with mallet

4. Before placing the streetlight pole on top of the base, ensure the poles are evenly balanced. Apply oil onto the metal parts to avoid rusting.



Integrated. Intelligent. Innovative



※Note: Do not insert the Cable/Lamp in this manner



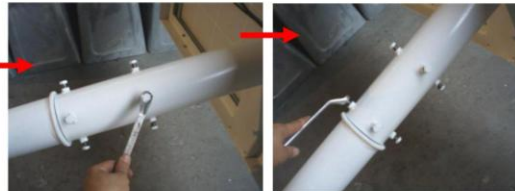
Lamp (Light-1、Light-2) Cable connect to (Light-1、Light-2) Cable



Use No.14 trigger to fix the lamp screw



Install Solar Panel and Cable



Do not tighten screw for the solar panel frame too tight so upon installing the pole, the direction of the panel can be adjusted.
If the angle of the solar panel is already confirmed then tighten the screw to the correct angle.



Integrated. Intelligent. Innovative

After the streetlight structure is fixed. Place the battery inside the control box



Integrated. Intelligent. Innovative

Upon completion of the installation, please place screw covers on the four pole screws for protection from rust.



Finally pour cement around the base to complete the foundation.

