

UPVC INCH SIZE PRESSURE PIPE AND FITTINGS

BS EN 1452-2 ; PN-15(CLASS-E)

UPVC Pressure Pipes are manufactured as per the following dimensions :

Inch size Pressure Pipes : BS EN 1452-2

Size	Mean Outside Dia		Wall thickness		Wall thickness		Wall thickness	
			PN - 15 (CLASS-E)		PN - 12 (CLASS-D)		PN - 9 (CLASS-C)	
	Min	Max	Min	Max	Min	Max	Min	Max
1/2"	21.2	21.5	1.7	2.1	-	-	-	-
3/4"	26.6	26.9	1.9	2.5	-	-	-	-
1"	33.4	33.7	2.2	2.8	-	-	-	-
1 1/4"	42.1	42.4	2.7	3.3	2.2	2.7	-	-
1 1/2"	48.1	48.4	3.1	3.7	2.5	3.0	-	-
2"	60.2	60.5	3.9	4.5	3.1	3.7	2.5	3.0
3"	88.7	89.1	5.7	6.6	4.6	5.3	3.5	4.1
4"	114.1	114.5	7.3	8.4	6.0	6.9	4.5	5.2
6"	168	168.5	10.8	12.5	8.8	10.2	6.6	7.6
8"	218.8	219.4	12.6	14.5	10.3	11.9	7.8	9.0
10"	272.6	273.4	15.7	18.1	12.8	14.8	9.7	11.2
12"	323.4	324.3	18.7	21.6	15.2	17.5	11.5	13.3

UPVC High Pressure Pipes to BS EN 1452-2 Metric series

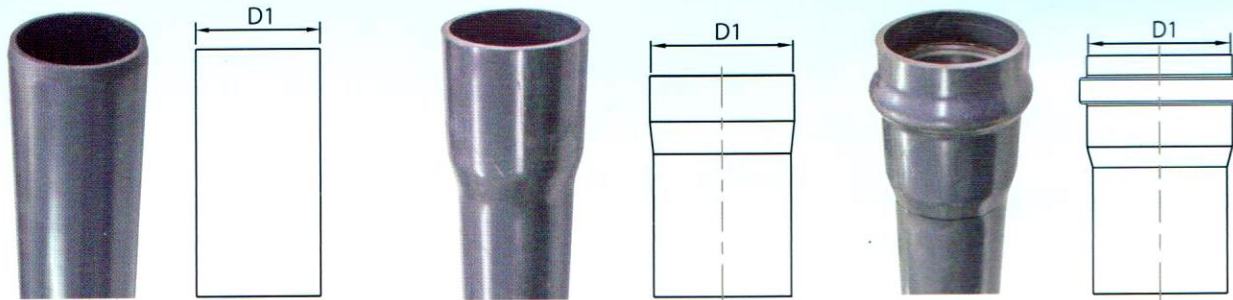
Size	Mean Outside Dia		Wall thickness		Wall thickness		Wall thickness	
			PN-16		PN-10		PN-6	
	Min	Max	Min	Max	Min	Max	Min	Max
20 mm	20.0	20.2	1.5	1.9	-	-	-	-
25 mm	25.0	25.2	1.9	2.3	-	-	-	-
32 mm	32.0	32.2	2.4	2.9	1.6	2.0	-	-
40 mm	40.0	40.2	3.0	3.5	1.9	2.3	1.5	1.9
50 mm	50.0	50.2	3.7	4.3	2.4	2.9	1.6	2.0
63 mm	63.0	63.2	4.7	5.4	3.0	3.5	2.0	2.4
75 mm	75.0	75.3	5.6	6.4	3.6	4.2	2.3	2.8
90 mm	90.0	90.3	6.7	7.6	4.3	5.0	2.8	3.3
110 mm	110.0	110.3	6.6	7.5	4.2	4.9	2.7	3.2
160 mm	160.0	160.4	9.5	10.7	6.2	7.1	4.0	4.6
200mm	200.0	200.4	11.9	13.3	7.7	8.7	4.9	5.6
250mm	250.0	250.5	14.8	16.5	9.6	10.8	6.2	7.1
315mm	315.0	315.6	18.7	20.8	12.1	13.6	7.7	8.7
400mm	400.0	400.7	23.7	26.3	15.3	17.1	9.8	11



For Water Supply, Irrigation, Drainage mains & Duct Cabling

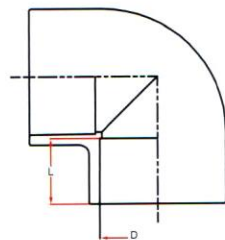
Available in standard length of 5.8 / 6 meters with plain ends, pushfit rubber ring (for dia > 2") or solvent socket ends.

Working pressure given are based on a temperature of 20°C. UPVC Pipes derate at higher temperature.



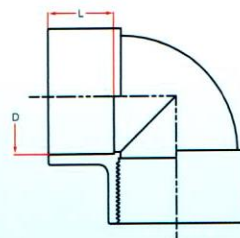
UPVC INCH SIZE PRESSURE PIPES AND FITTINGS

(BS EN 1452-3; CLASS-E; PN-15)



1) Elbow 90° Plain

Size	D	L	PN
1/2"	21.3	16.5	15
3/4"	26.7	19.5	15
1"	33.5	22.5	15
1 1/4"	42.2	27.0	15
1 1/2"	48.2	30.0	15
2"	60.3	36.0	15
2 1/2"	75.1	44.0	15
3"	88.8	50.5	15
4"	114.2	63.0	15
6"	168.2	90.0	15



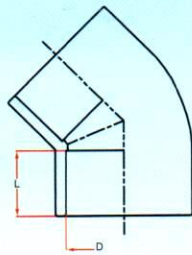
2) Female Elbow 90° One end plain/other end BSP female thread

Size	D	L	PN
1/2"	21.3	16.5	15
3/4"	26.7	19.5	15
1"	33.5	22.5	15
1 1/4"	42.2	27.0	15
1 1/2"	48.2	30.0	15
2"	60.3	36.0	15
2 1/2"	75.1	44.0	15
3"	88.8	50.5	15



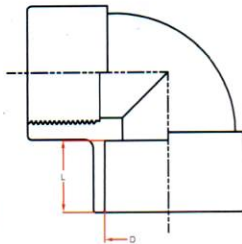
UPVC INCH SIZE PRESSURE PIPES AND FITTINGS

(BS EN 1452-3; CLASS-E; PN-15)



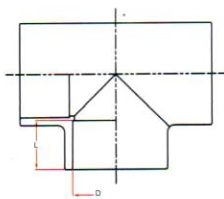
3) Elbow 45° Plain

Size	D	L	PN
1/2"	21.3	16.5	15
3/4"	26.7	19.5	15
1"	33.5	22.5	15
1 1/4"	42.2	27.0	15
1 1/2"	48.2	30.0	15
2"	60.3	36.0	15
2 1/2"	75.1	44.0	15
3"	88.8	50.5	15
4"	114.2	63.0	15
6"	168.2	90.0	15



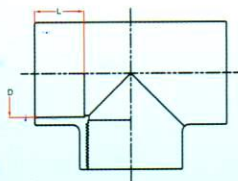
4) Reducing Female Elbow 90° One end plain/other end BSP female thread

Size	D	L	PN
1 x 1/2"	33.5	22.5	15
1 x 3/4"	33.5	22.5	15



5) Tee 90° Plain

Size	D	L	PN
1/2"	21.3	16.5	15
3/4"	26.7	19.5	15
1"	33.5	22.5	15
1 1/4"	42.2	27.0	15
1 1/2"	48.2	30.0	15
2"	60.3	36.0	15
2 1/2"	75.1	44.0	15
3"	88.8	50.5	15
4"	114.2	63.0	15
6"	168.2	90.0	15



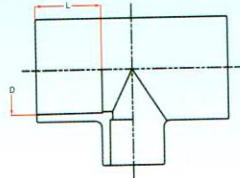
6) Female Tee : Two end plain/Center end BSP female thread

Size	D	L	PN
1/2"	21.3	16.5	15
3/4"	26.7	19.5	15
1"	33.5	22.5	15
1 1/4"	42.2	27.0	15
1 1/2"	48.2	30.0	15
2"	60.3	36.0	15
2 1/2"	75.1	44.0	15
3"	88.8	50.5	15



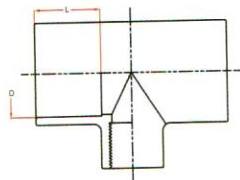
UPVC INCH SIZE PRESSURE PIPES AND FITTINGS

(BS EN 1452-3; CLASS-E; PN-15)



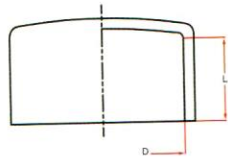
7) Reducing Tee

Size	D	L	PN
3/4 x 1/2"	21.3	19.5	15
1 x 1/2"	33.5	22.5	15
1 x 3/4"	33.5	22.5	15
1 1/2 x 1/2"	48.2	30.0	15
1 1/2 x 3/4"	48.2	30.0	15
1 1/2 x 1"	48.2	30.0	15
2 x 1/2"	60.3	36.0	15
2 x 3/4"	60.3	36.0	15
2 x 1"	60.3	36.0	15
2 x 1 1/2"	60.3	36.0	15
3 x 2"	88.8	50.5	15
4 x 3"	114.2	63.0	15



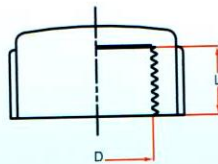
8) Reducing Female Tee: Two end plain/Center end BSP female thread

Size	D	L	PN
3/4 x 1/2"	21.3	19.5	15
1 x 1/2"	33.5	22.5	15
1 x 3/4"	33.5	22.5	15
1 1/2 x 1/2"	48.2	30.0	15
1 1/2 x 3/4"	48.2	30.0	15
1 1/2 x 1"	48.2	30.0	15
2 x 1/2"	60.3	36.0	15
2 x 3/4"	60.3	36.0	15
2 x 1"	60.3	36.0	15



9) End Cap Plain

Size	D	L	PN
1/2"	21.3	16.5	15
3/4"	26.7	19.5	15
1"	33.5	22.5	15
1 1/4"	42.2	27.0	15
1 1/2"	48.2	30.0	15
2"	60.3	36.0	15
2 1/2"	75.1	44.0	15
3"	88.8	50.5	15
4"	114.2	63.0	15
6"	168.2	90.0	15



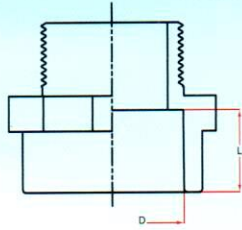
10) Thread Cap ; BSP female thread

Size	D	PN
1/2"	21.3	15
3/4"	26.7	15
1"	33.5	15
1 1/4"	42.2	15
1 1/2"	48.2	15
2"	60.3	15
2 1/2"	75.1	15
3"	88.8	15



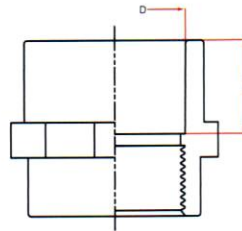
UPVC INCH SIZE PRESSURE PIPES AND FITTINGS

(BS EN 1452-3; CLASS-E; PN-15)



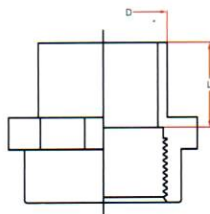
11) Male Thread Adaptor/Nipple Socket; BSP male thread/plain socket

Size	D	L	PN
1/2"	21.3	16.5	15
3/4"	26.7	19.5	15
1"	33.5	22.5	15
1 1/4"	42.2	27.0	15
1 1/2"	48.2	30.0	15
2"	60.3	36.0	15
2 1/2"	75.1	44.0	15
3"	88.8	50.5	15
4"	114.2	63.0	15



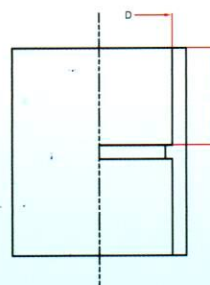
12) Female Socket Adaptor ; BSP female thread/plain socket

Size	D	L	PN
1/2"	21.3	16.5	15
3/4"	26.7	19.5	15
1"	33.5	22.5	15
1 1/4"	42.2	27.0	15
1 1/2"	48.2	30.0	15
2"	60.3	36.0	15
2 1/2"	75.1	44.0	15
3"	88.8	50.5	15
4"	114.2	63.0	15



13) Female Slip Adaptor ; BSP female thread/male plain socket

Size	D	L	PN
1/2"	21.3	16.5	15
3/4"	26.7	19.5	15
1"	33.5	22.5	15
1 1/4"	42.2	27.0	15
1 1/2"	48.2	30.0	15
2"	60.3	36.0	15



14) Socket

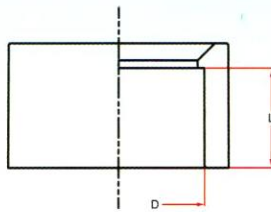
Size	D	L	PN
1/2"	21.3	16.5	15
3/4"	26.7	19.5	15
1"	33.5	22.5	15
1 1/4"	42.2	27.0	15
1 1/2"	48.2	30.0	15
2"	60.3	36.0	15
2 1/2"	75.1	44.0	15
3"	88.8	50.5	15
4"	114.2	63.0	15
6"	168.2	90.0	15



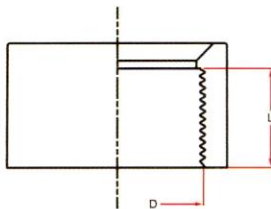
UPVC INCH SIZE PRESSURE PIPES AND FITTINGS

(BS EN 1452-3; CLASS-E; PN-15)

15) Reducer Bush

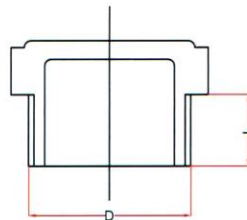


Size	D	L	PN
3/4 x 1/2"	21.3	19.5	15
1 x 1/2"	33.5	22.5	15
1 x 3/4"	33.5	22.5	15
1 1/4 x 1/2"	42.2	27.0	15
1 1/4 x 3/4"	42.2	27.0	15
1 1/4 x 1"	42.2	27.0	15
1 1/2 x 1/2"	48.2	30.0	15
1 1/2 x 3/4"	48.2	30.0	15
1 1/2 x 1"	48.2	30.0	15
2 x 1/2"	60.3	36.0	15
2 x 3/4"	60.3	36.0	15
2 x 1"	60.3	36.0	15
2 x 1 1/2"	60.3	36.0	15
2 1/2 x 1 1/2"	75.1	44.0	15
2 1/2 x 2"	75.1	44.0	15
3 x 1 1/2"	88.8	50.5	15
3 x 2"	88.8	50.5	15
3 x 2 1/2"	88.8	50.5	15
4 x 3"	114.2	63.0	15
4 x 2"	114.2	63.0	15
6 x 3"	168.2	90.0	15
6 x 4"	168.2	90.0	15



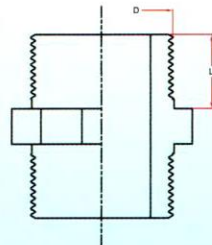
16) Female Reducer Bush ; BSP female thread

Size	D	L	PN
3/4 x 1/2"	21.3	19.5	15
1 x 1/2"	33.5	22.5	15
1 x 3/4"	33.5	22.5	15
1 1/2 x 1/2"	48.2	30.5	15
2 x 1/2"	60.3	36.0	15



17) Male Plug

Size	L (mm)	PN
1/2"	11.4	15
3/4"	12.7	15
1"	14.5	15
1 1/4"	16.8	15
1 1/2"	16.8	15
2"	21.1	15



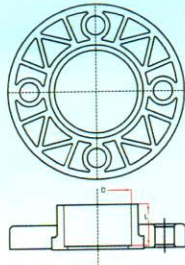
18) Hex Nipple

Size	L (mm)	PN
1/2"	11.4	15
3/4"	12.7	15
1"	14.5	15
1 1/4"	16.8	15
1 1/2"	16.8	15
2"	21.1	15



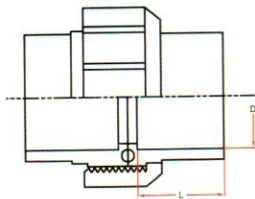
UPVC INCH SIZE PRESSURE PIPES AND FITTINGS

(BS EN 1452-3; CLASS-E; PN-15)



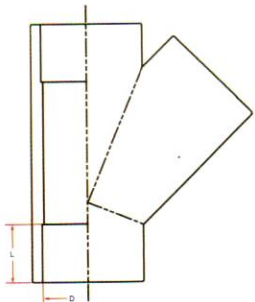
19) Flanges with stub

Size	D	L	PN
1 1/2"	48.2	30.0	15
2"	60.3	36.0	15
2 1/2"	75.1	44.0	15
3"	88.8	50.5	15
4"	114.2	63.0	15
6"	168.2	40.0	15



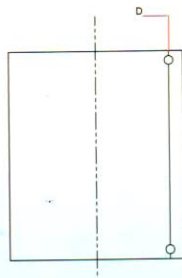
20) Unions socket type

Size	D	L	PN
1/2"	21.3	16.5	15
3/4"	26.7	19.5	15
1"	33.5	22.5	15
1 1/2"	48.2	30.0	15
2"	60.3	36.0	15
2 1/2"	75.1	44.0	15
3"	88.8	50.5	15



21) WYE 45°

Size	D	L	PN
1/2"	21.3	16.5	15
3/4"	26.7	19.5	15
1"	33.5	22.5	15
1 1/4"	42.2	27.0	15
1 1/2"	48.2	30.0	15
2"	60.3	36.0	15
2 1/2"	75.1	44.0	15
3"	88.8	50.5	15
4"	114.2	63.0	15
6"	168.2	90.0	15



22) Repair Socket

Size	D	L	PN
2"	60.4	-	15
3"	89.1	-	15
4"	114.6	-	15
6"	168.6	-	15

