



7W

5630SMD



### Applications

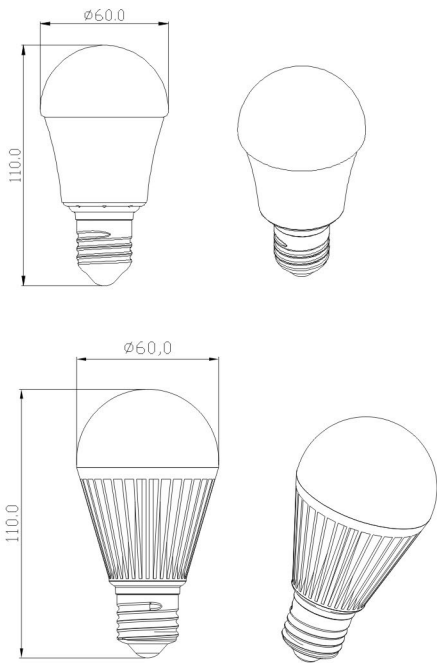
- ◇ Corridor lights, architectural point of light, windows Gallery lighting
- ◇ Furniture, lighting, commercial lighting, museums, exhibition lighting
- ◇ lighting projects, banks, hotels, schools, bookstores, sports and other lighting

Choose from our  
extensive collection of  
high-quality LED lights

### Feature

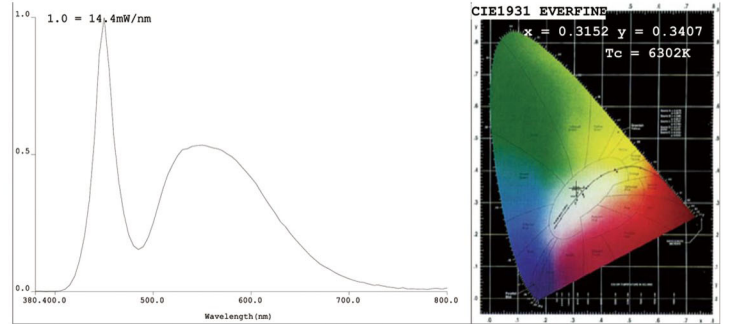
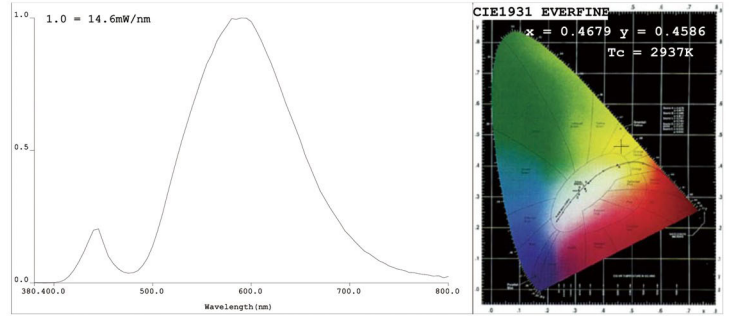
- ◇ 1. The working voltage for LED bulbs is AC85-265V. Please make sure the working voltage is AC90-260V before you connected the bulbs to the power supply. Connection to higher voltage will result in permanent damage.
- ◇ 2. Don't connect the bulb to the power at heat environment, because the product can be damaged by its own emitting heat, and the product life span will be shorten when work environment is beyond a certain temperature. So please use this product at room temperature.
- ◇ 3. Prohibit any contact to the metal part of bulb base after connected to the power supply to avoid the electric shock.
- ◇ 4. Please check whether any bulbs damage caused by delivery or not before you unpacked and prepare to use the bulbs. If yes, please don't use it and inform the supplier. The products can only be used in good condition.





**Notes:**

1. All dimensions are in millimeters.
2. Tolerance is  $\pm 0.25\text{mm}$



**Electrical/Optical Characteristics**

Power Dissipation	7W	Color Temperature	Cool white	5600K-7000K
Input Voltage	AC110V-240V		Warmwhite	2700K-3200K
Frequency	50/60HZ	Luminous Flux( Lm)	Cool white	500-530lm
Dielectric strength	5S@4000VAC,5mA		Warmwhite	460-480lm
Radiant angle	120°	Compliant humidity		$\leq 95\%$
Light effect	75mW	Color-rendering index		$\geq 70$
Material	Aluminum+glass	Net weight (g)		72g/107g

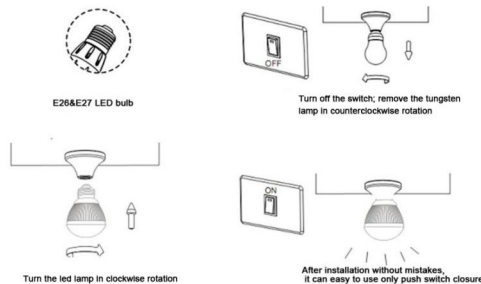
**Electrical/Optical Characteristics**

Power Dissipation	9W	Color Temperature	Cool white	5600K-7000K
Input Voltage	AC 85V-240V		Warm white	2700K-3200K
Frequency	50/60HZ	Luminous Flux( Lm )	Cool white	780-810lm
Dielectric strength	5S@ 4000VAC,5mA		Warm white	740-770lm
Radiant angle	120°	Compliant humidity		$\leq 95\%$
Light effect	90lm/W	Color-rendering index		$\geq 70$
Material	Aluminum+pc	Net weight (g)		117g
Operating Life	$\approx 20000$	Operating Temperature		-37℃ ~ 55
Storage Temperature	-40℃ ~ 85	Operating Humidity		30 ~ 85

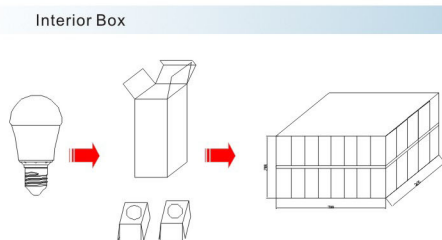
**Note**

- The working voltage for LED bulbs is AC85V-240V. Please make sure the working voltage is AC85V-240V before you connected the bulbs to the power supply. Connection to higher voltage will result in permanent damage.
- According to the required amount of bulbs estimated firstly and rated voltage of every single bulb, calculate the total power and design the distribution program.
- The power supply for the bulb is AC85V-240V; prohibit any contact to the metal part of bulb base after connected to the power supply to avoid the electric shock.
- Please check whether any bulbs damage caused by delivery or not before you unpacked and prepare to use the bulbs. If yes, please don't use it and inform the supplier. The products can only be used in good condition.
- Please follow the constructions and cautions on the leaflet so as to ensure the safe usage and the good condition of products. Any damage or defect caused by failure to comply with the leaflet is out of the supplier's responsibility.
- Please don't connect the bulbs to the power supply promptly when the environmental temperature is surging because the origin generated heat stream can spoil the products. You are strongly recommended to do the connection after the product is in room temperature.
- Before installation, please make sure that the installation location can fully support the product. The products should be installed in plat place resisting to shock, swing, and fire fire.
- Because outer covering temperature can amount to 50℃, keep the bulbs any from these heat-sensitive equipments. LED product is sensitive to environmental temperature and its life will be greatly shortened whenever the working temperature is over50℃. So please keep the product away from the heat origins and keep it working in a venting condition to ensure the proper environmental temperature. Product's life is longer under 25℃ .working temperature.

**Installation**



**Package**



Eastech Electrical Trading LLC  
 P.Box #233781, Dubai, UAE  
 Tel:00971 4 2503067  
 Fax:00971 4 3503086  
 Email: eastech@emirates.net.ae





### 7W/9W/12W 5630SMD



#### Applications

- ◇ Corridor lights, architectural point of light, windows Gallery lighting.
- ◇ Furniture, lighting, commercial lighting, museums, exhibition lighting
- ◇ lighting projects, banks, hotels, schools, bookstores, sports and other lighting

#### Feature

- ◇ 1.The working voltage for LED bulbs is AC85-265V. Please make sure the working voltage is AC90-260V before you connected the bulbs to the power supply. Connection to higher voltage will result in permanent damage.
- ◇ 2.Don't connect the bulb to the power at heat environment,because the product can be damaged by its own emitting heat,and the product life span will be shorten when work environment is beyond a certain temperature.So please use this product at room temperature.
- ◇ 3. Prohibit any contact to the metal part of bulb base after connected to the power supply to avoid the electric shock.
- ◇ 4.Please check whether any bulbs damage caused by delivery or not before you unpacked and prepare to use the bulbs. If yes, please don't use it and inform the supplier. The products can only be used in good condition.

