



15,700+  
LUMENS

120+  
LM/W

70,000  
HOUR L70

130W

10 YEAR  
GUARANTEE

3 X CREE  
LEDS

IP54

70CRI-3XCREE MODEL



## UNIBAY

A multi-purpose product to suit HighBay, Sports halls, and many other applications. Standard mounting arrangements make the UniBay a workhorse designed to last.

The “Multi-Mount” fitting options provide the versatility you need when it comes to installing the product with ease in a variety of applications.

The powerful LED luminaire is capable of producing 15,700+ lumens and its unique electronics ensure a safe and non-distracting flicker-free light. The UniBay is manufactured in the UK from the latest and highest quality components and features a 10 year unlimited-usage guarantee.

Developed to meet the needs of large-scale interior lighting, the UniBay is a reliable and highly efficient fitting drawing just 130W and achieving an efficacy of 120+ lm/W. The units are excellent replacements for existing metal halide fittings

because of their high efficacy and minimal maintenance requirements - providing 16 years of light (12 hours operation per day) before reaching L70.

The fixture is also eligible for the UK Government’s Enhanced Capital Allowance (ECA) scheme. This enables businesses to write off the entire cost of purchasing and installing the UniBay against their taxable profits in the same year. This reduces the cash “out of pocket” cost to businesses by up to 23%.

## APPLICATIONS

- Interior area lighting - Sports Halls - Lawn Tennis Assoc
- Interior floodlighting - Warehousing
- Hangars - Retail



CHOOSE YOUR FIXING OPTION (FIXING NOT INCLUDED)



EMERGENCY MODULE FITTED (OPTIONAL)



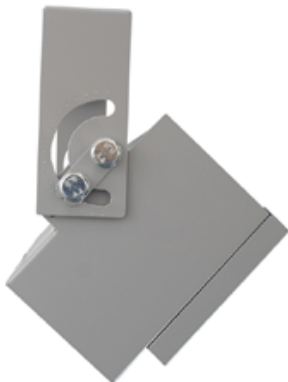
F001 - GRIPPLE WIRE



F002 - "L" BRACKET X2



F003 - LOW PROFILE BRACKET



F004 - ADJUSTABLE/TILT BRACKET



F005 - DUAL BRACKET





## TECHNICAL SPECIFICATION

### Light Source

LEDs 3 x CREE High Power White LEDs

**Light Output & Temperatures** 5000K Cool White\*: 15,700+ lm  
\* Standard temperature. A wide variety of LED colour temperatures are available on request. Please contact us for details.

**L<sub>70</sub><sup>†</sup>** 70,000 hours (16 yrs at 12hrs/day)

**CRI** 80

**Beam Angles** Standard 110° wide beam  
Additional beam angles are: 90°, 42°, 25°, Batwing Narrow, Batwing Wide

**Brightness** Instant. No warm-up or re-strike time

**Flicker Free** Continuous current ensures smooth and a flicker-free light. We do not use Pulse Width Modulation (PWM) which strobos the LEDs at high frequency producing an unsafe or agitating light.

**Electrical Power Supply** 100-277 VAC, 130W max, 50-60Hz self adjusting PSU

**Power Factor** 0.94

**Power Cable** 0.2m (7.87") captive

### Physical

**Finish** Silver high quality AkzoNobel Interpon architectural powder coating (custom RAL colours and screen-printed branding available on request).

**Mounting** Depending on mounting option chosen, a wide variety from 3 x M10 threaded holes, direct attachment or hanging by eye bolts / Unistrut

**Mount Height** Up to 4m+ to achieve a minimum 200 lux at floor level (variable by configuration) Contact us for technical installation guides or light planning services

**Emergency Module (optional)** 3 hours non-maintained, 3% of fixture output. Optics correspond with fixture.

**Dimensions** 355 (W) x 250 (H) x 115mm (D) (14.0 x 9.8 x 4.5")

**Weight**

UNIBAY	- 6.30kg (14.6 lbs)
F001	- 0.12kg (0.26 lbs)
F002	- 0.12kg (0.26 lbs)
F003	- 0.40kg (0.88 lbs)
F004	- 0.70kg (1.54 lbs)
F005	- 1.06kg (2.34 lbs)

### Quality and Reliability

**Quality** This unit is manufactured in the UK using only the highest quality components.

**Reliability** Each unit is load tested thoroughly before leaving the factory.

### Operating Conditions and Precautions

**Safety** The fixture has automatic thermal management to protect from overheating. The fixture is also 'F' marked for mounting on normally combustible surfaces.

**Temperature** -20°C to +45°C  
With Emergency Module 0°C to +45°C

**Environment** Indoor/dry conditions up to IP54

**Compliance** The UniBay is CE marked and compliant with the RoHS directive and ECA.

<sup>†</sup> LEDs do not fail in the same way as conventional light fittings. Light output gradually diminishes in an LED source unlike other luminaires where failure would occur before significant depreciation. L<sub>70</sub> is the point at which light output has fallen to 70% of its original value, an industry standard measurement and rule of thumb for LED luminaire replacement.



### Guarantee

10 years from the date of original purchase. The guarantee is limited to parts and labour. The guarantee is void if the unit is misused, the cable connections are not in a dry environment, or unauthorised persons perform repairs. In the unlikely event of a fault occurring, do not use without repair. Return the unit to your supplier with a description of the fault, or direct to Pulsar Light for immediate attention.

### Disclaimer

Due to continual research and product development this specification is subject to change without notice.





The UniBay is reliable, with state of the art features and incredible efficacy.

## UniBay Industrial - Best for: Industrial, Warehousing, Hangar

Watts	Lumens	Lm/w (Max)	LED	CRI
130	15700	121	3 x High Power Cree	>70
165	18900	114	3 x High Power Cree	>70
260	31000	121	6 x High Power Cree	>70
330	37800	114	6 x High Power Cree	>70

Certifications: IP54, CE, ECA, CIBSE

## UniBay Commercial - Best for: Sports, retail, public spaces

Watts	Lumens	Lm/w (Max)	LED	CRI
130	14700	113	3 x High Power Cree	>80
165	17700	107	3 x High Power Cree	>80
260	29400	113	6 x High Power Cree	>80
330	35400	107	6 x High Power Cree	>80

Certifications: IP54, CE, ECA, CIBSE, Lawn Tennis Association, Squash and Racketball Association, Badminton England

## UniBay Ultra - Best for: Film/TV, high end sports, colour critical industrial, Museums

Watts	Lumens	Lm/w (Max)	LED	CRI
130	11900	92	3 x High Power Cree	>95
165	14400	87	3 x High Power Cree	>95
260	23800	92	6 x High Power Cree	>95
330	28800	87	6 x High Power Cree	>95

Certifications: IP54, CE, ECA, CIBSE, Lawn Tennis Association, Squash and Racketball Association, Badminton England





## UniBay FITTING Options & Guide

### UniBay Order Code Options

Family (4)	Power (3)	CRI Value (4)	LED (2)	Finish (4)	Optic (3)	Other1 (2)	Other2 (2)
UBAY	130	CR70	50	9006	025	EM	xx
	165	CR80	57	9016	042	xx	xx
		CR90	40	BLCK	110		xx
			35		G90		xx
			30		B30		
			27		B90		

Example	UBAY	130	CR80	50	9006	110	xx	xx
What it means	UniBay	130W	80CRI	5000K	Silver	110 Deg	xx	xx

**Note:** Part Nos. should always be 30 characters

Options Guide	Category	Option	Description
	Family	UBAY	Product is a UniBay
	Power	130	130 Watts (1050mA)
		165	165 Watts (1400mA)
	CRI Value	CR70	Industrial (70CRI)
		CR80	Commercial (80CRI)
		CR95	Ultra (95CRI)
	LED	57	5700 Kelvin
		50	5000 Kelvin
		40	4000 Kelvin
		35	3500 Kelvin
		30	3000 Kelvin
		27	2700 Kelvin
	Finish	9006	Grey/Silver
		9016	White
		BLCK	Pulsar Black
		????	Custom Colour (insert 4 digit RAL Code)
	Beam Angle	025	25 Degrees
		042	42 Degrees
		110	110 Degrees
		G90	90 Degrees (Glare Control)
		B30	Batwing (Narrow)
		B90	Batwing (Wide)
	Other 1	EM	Emergency Light

**Note:** Red Outline = Standard Options

Please check price & availability for non standard options





## UniBay FIXING Options & Guide

Fixing Options	Family (4)	Power (3)	Fixing (3)	LED (2)	Finish (4)	Optic (3)	Other (2)	Other (2)
	UBAY	xxx	F001	xx	9006	xxx	xx	xx
			F002		9016			
			F003		BLCK			
			F004					
			F005					

Example	UBAY	xxx	F002	xx	9006	xxx	xx	xx
What it means	UniBay	Fixing	L Bracket	xx	Silver	xxx	xx	xx

**Note:** Part Nos. should always be 30 characters

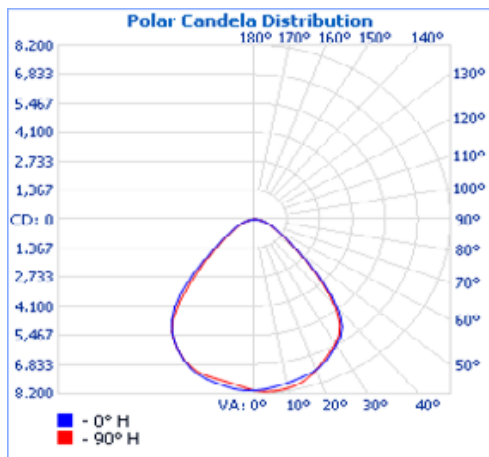
Fixing Guide	Category	Option	Description
	Family	UBAY	UniBay
	Variant	F001	Gripple Wire
		F002	"L" Bracket (2 off)
		F003	Low Profile Bracket
		F004	Adjustable / Tilt Bracket
		F005	Dual Bracket
	Finish	9006	Silver / Grey
		9016	White
		BLCK	Pulsar Black (no RAL Code)
		????	Custom Colour (insert 4 Digit RAL Code)

**Note:** Red Outline = Standard Options

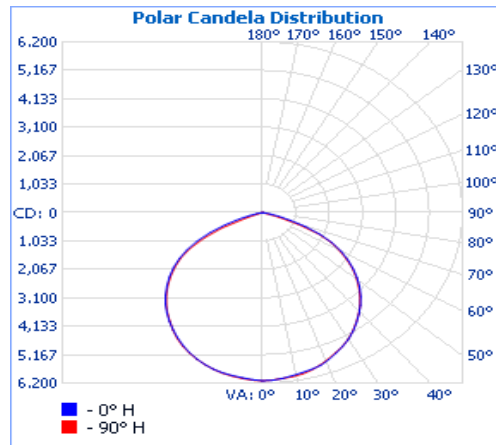




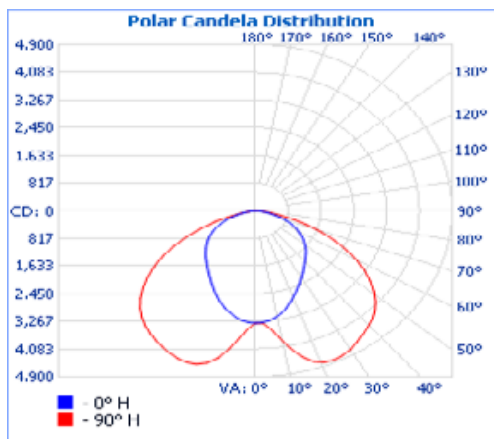
## PHOTOMETRIC DATA



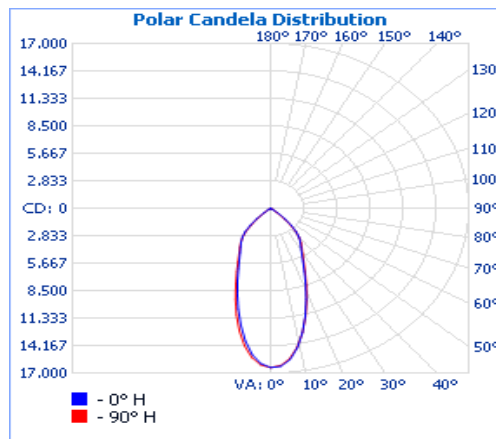
**5000K Cool White 90°**  
Best for: Sports, open areas, factories, warehouses, retail



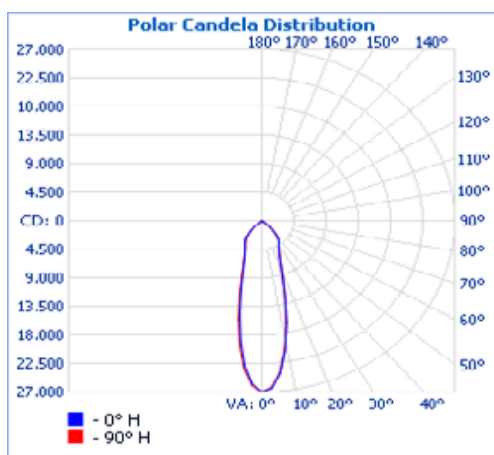
**5000K Cool White with 110°**  
Best for: Wide open spaces, open warehouses, storage, efficiency



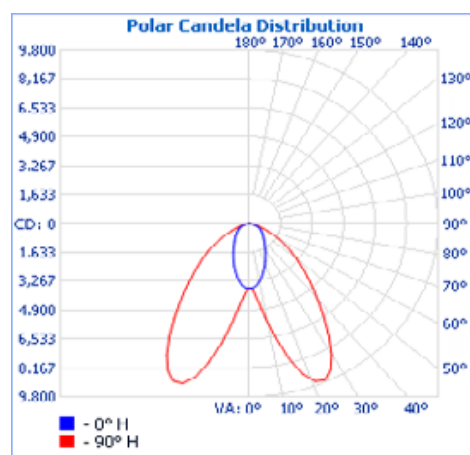
**5000K Cool White 90° x 130°**  
Best for: Very wide open spaces with small number of fixtures.



**5000K Cool White 42°**  
Best for: Particularly high warehouses/factories, aircraft hangers, sports.



**5000K Cool White 25° Narrowest beam angle**  
Best for: Very high buildings requiring high lux levels.



**5000K Cool White 30 x 80° Narrow asymmetric beam**  
Best for: Even lighting for aisles in warehouses.





Eco   
Range