

UPVC MILLIMETER SIZE PRESSURE PIPE FITTINGS

DIN 8061 / 8062 ; PN-16 ; PN-10 ; PN-6

Millimeter size Pressure Pipes : DIN 8061 / 8062

Size	Mean Outside Dia		Wall thickness		Wall thickness		Wall thickness	
			PN - 16		PN - 10		PN - 6	
	Min	Max	Min	Max	Min	Max	Min	Max
20 mm	20.0	20.2	1.5	1.9	-	-	-	-
25 mm	25.0	25.2	1.9	2.3	1.5	1.9	-	-
32 mm	32.0	32.2	2.4	2.9	1.8	2.2	-	-
40 mm	40.0	40.2	3.0	3.5	1.9	2.3	1.8	2.2
50 mm	50.0	50.2	3.7	4.3	2.4	2.9	1.8	2.2
63 mm	63.0	63.2	4.7	5.4	3.0	3.5	1.9	2.3
75 mm	75.0	75.3	5.6	6.4	3.6	4.2	2.2	2.7
90 mm	90.0	90.3	6.7	7.6	4.3	5.0	2.7	3.2
110 mm	110.0	110.30	8.2	9.3	5.3	6.1	3.2	3.8
160 mm	160.0	160.40	11.9	13.3	7.7	8.7	4.7	5.4
180 mm	180.0	180.40	13.4	15.0	8.6	9.7	5.3	6.1
200 mm	200.0	200.40	14.9	16.6	9.6	10.8	5.9	6.7
225 mm	225.0	225.50	16.7	18.6	10.8	12.1	6.6	7.5
250 mm	250.0	250.50	18.6	20.7	11.9	13.3	7.3	8.3
280 mm	280.0	280.60	20.8	23.1	13.4	15.0	8.2	9.3
315 mm	315.0	315.60	23.4	26.0	15.0	16.7	9.2	10.4
355 mm	355.0	355.70	26.3	29.9	16.9	18.8	10.4	11.7
400 mm	400.0	400.70	29.7	32.9	19.1	21.3	11.7	13.1

UPVC High Pressure Pipes to ISO 161-1 Metric series

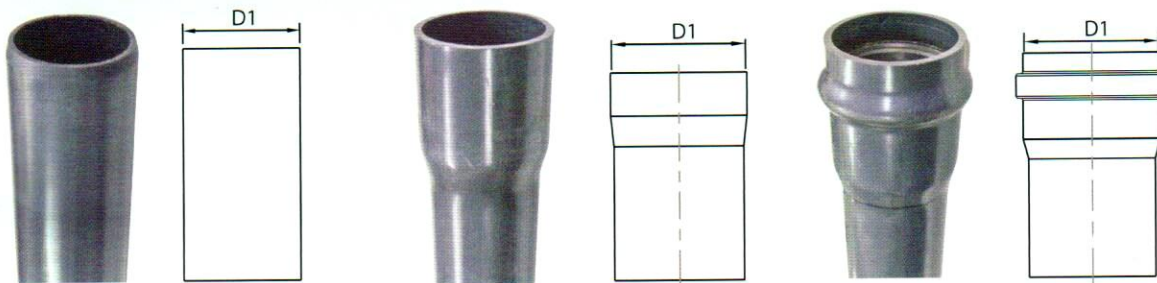
Size	Mean Outside Dia		Wall thickness		Wall thickness		Wall thickness	
			PN - 16		PN - 10		PN - 6	
	Min	Max	Min	Max	Min	Max	Min	Max
20 mm	20.0	20.2	1.2	1.6	-	-	-	-
25 mm	25.0	25.2	1.5	1.9	-	-	-	-
32 mm	32.0	32.2	1.9	2.3	-	-	-	-
40 mm	40.0	40.2	2.4	2.9	1.6	2.0	-	-
50 mm	50.0	50.2	3.0	3.6	2.0	2.5	1.3	1.7
63 mm	63.0	63.2	3.8	4.4	2.5	3.0	1.6	2.0
75 mm	75.0	75.3	4.5	5.2	2.9	3.4	1.9	2.3
90 mm	90.0	90.3	5.4	6.2	3.5	4.1	2.2	2.7
110 mm	110.0	110.3	6.6	7.5	4.2	4.9	2.7	3.2
160 mm	160.0	160.4	9.5	10.7	6.2	7.1	4.0	4.7
200mm	200.0	200.4	11.9	13.3	7.7	8.7	4.9	5.6
250mm	250.0	250.5	14.8	16.5	9.6	10.8	6.2	7.1
315mm	315.0	315.6	18.7	20.8	12.1	13.6	7.7	8.7
400mm	400.0	400.7	23.7	26.3	15.3	17.1	9.8	11.0



For Water Supply, Irrigation, Drainage mains & Duct Cabling

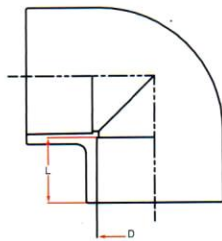
Available in standard length of 5.8 / 6 meters with plain ends, pushfit rubber ring (for dia > / 75mm) or solvent socket ends.

Working pressure given are based on a temperature of 20°C. UPVC Pipes derate at higher temperature.



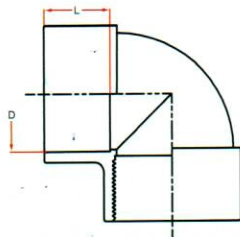
UPVC MILLIMETER SIZE PRESSURE PIPES AND FITTINGS

(DIN 8063 ; PN-16)



1) Elbow 90° Plain

Size	D	L	PN
20 mm	20.1	16.0	16
25 mm	25.1	19.0	16
32 mm	32.1	22.0	16
40 mm	40.1	26.0	16
50 mm	50.1	31.0	16
63 mm	63.1	38.0	16
75 mm	75.1	44.0	16
90 mm	90.1	51.0	16
110 mm	110.1	61.0	16
160 mm	160.2	86.0	16
200 mm	200.2	106.0	10



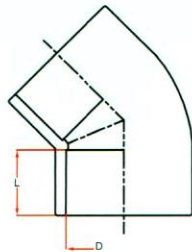
2) Female Elbow 90° One end plain/other end BSP female thread

Size	D	L	PN
20 x 1/2"	20.1	16.0	16
25 x 3/4"	25.1	19.0	16
32 x 1"	32.1	22.0	16
40 x 1 1/4"	40.1	26.0	16
50 x 1 1/2"	50.1	31.0	16
63 x 2"	63.1	38.0	16
75 x 2 1/2"	75.1	44.0	16
90 x 3"	90.1	51.0	16



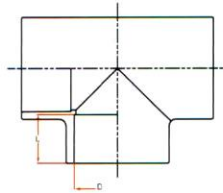
UPVC MILLIMETER SIZE PRESSURE PIPES AND FITTINGS

(DIN 8063 ; PN-16)



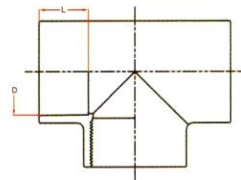
3) Elbow 45° Plain

Size	D	L	PN
20 mm	20.1	16.0	16
25 mm	25.1	19.0	16
32 mm	32.1	22.0	16
40 mm	40.1	26.0	16
50 mm	50.1	31.0	16
63 mm	63.1	38.0	16
75 mm	75.1	44.0	16
90 mm	90.1	51.0	16
110 mm	110.1	61.0	16
160 mm	160.2	86.0	16
200 mm	200.2	106.0	10



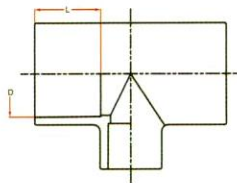
4) Tee 90° Plain

Size	D	L	PN
20 mm	20.1	16.0	16
25 mm	25.1	19.0	16
32 mm	32.1	22.0	16
40 mm	40.1	26.0	16
50 mm	50.1	31.0	16
63 mm	63.1	38.0	16
75 mm	75.1	44.0	16
90 mm	90.1	51.0	16
110 mm	110.1	61.0	16
160 mm	160.2	86.0	16
200 mm	200.2	106.0	10



5) Female Tee : Two end plain/Center end BSP female thread

Size	D	L	PN
20 x 1/2"	20.1	16.0	16
25 x 3/4"	25.1	19.0	16
32 x 1"	32.1	22.0	16
40 x 1 1/4"	40.1	26.0	16
50 x 1 1/2"	50.1	31.0	16
63 x 2"	63.1	38.0	16
75 x 2 1/2"	75.1	44.0	16
90 x 3"	90.1	51.0	16

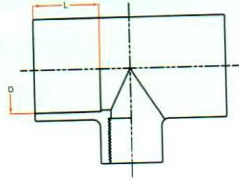


6) Reducing Tee

Size	D	L	PN
25 x 20mm	25.1	19.0	16
32 x 20mm	32.1	22.0	16
32 x 25mm	32.1	22.0	16
50 x 20mm	50.1	31.0	16
50 x 25mm	50.1	31.0	16
50 x 32mm	50.1	31.0	16
63 x 20mm	63.1	38.0	16
63 x 25mm	63.1	38.0	16
63 x 32mm	63.1	38.0	16
63 x 50mm	63.1	38.0	16
90x 63mm	90.1	51.0	16
110 x90mm	110.1	61.0	16
160 x 90mm	160.2	86.0	16
160 x 110mm	160.2	86.0	16
200 x 160mm	200.2	106.0	10

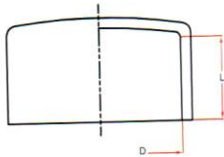


UPVC MILLIMETER SIZE PRESSURE PIPES AND FITTINGS (DIN 8063 ; PN-16)



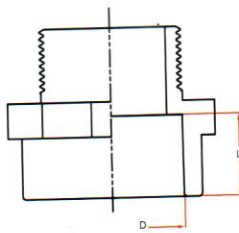
7) Reducing Female Tee: Two end plain/Center end BSP female thread

Size	D	L	PN
20 x 1/2"	20.1	16.0	16
25 x 1/2"	25.1	19.0	16
32 x 1/2"	32.1	22.0	16
32 x 3/4"	32.1	22.0	16
50 x 1/2"	50.1	31.0	16
50 x 3/4"	50.1	31.0	16
63 x 1/2"	63.1	38.0	16
63 x 3/4"	63.1	38.0	16



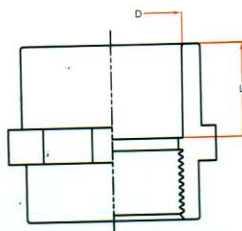
8) End Cap Plain

Size	D	L	PN
20 mm	20.1	16.0	16
25 mm	25.1	19.0	16
32 mm	32.1	22.0	16
40 mm	40.1	26.0	16
50 mm	50.1	31.0	16
63 mm	63.1	38.0	16
75 mm	75.1	44.0	16
90 mm	90.1	51.0	16
110 mm	110.1	61.0	16
160 mm	160.2	86.0	16
200 mm	200.2	106.0	10



9) Male Thread Adaptor/Nipple Socket; BSP male thread/plain socket

Size	D	L	PN
20 x 1/2"	20.1	16.0	16
25 x 3/4"	25.1	19.0	16
32 x 1"	32.1	22.0	16
40 x 1 1/4"	40.1	26.0	16
50 x 1 1/2"	50.1	31.0	16
63 x 2"	63.1	38.0	16
75 x 2 1/2"	75.1	44.0	16
90 x 3"	90.1	51.0	16
110 x 4"	110.1	61.0	16



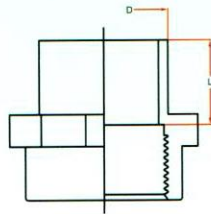
10) Female Socket Adaptor ; BSP female thread/plain socket

Size	D	L	PN
20 x 1/2"	20.1	16.0	16
25 x 3/4"	25.1	19.0	16
32 x 1"	32.1	22.0	16
40 x 1 1/4"	40.1	26.0	16
50 x 1 1/2"	50.1	31.0	16
63 x 2"	63.1	38.0	16
75 x 2 1/2"	75.1	44.0	16
90 x 3"	90.1	51.0	16
110 x 4"	110.1	61.0	16



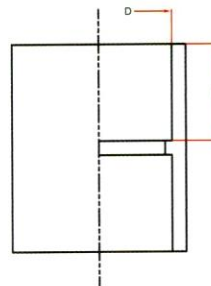
UPVC MILLIMETER SIZE PRESSURE PIPES AND FITTINGS

(DIN 8063 ; PN-16)



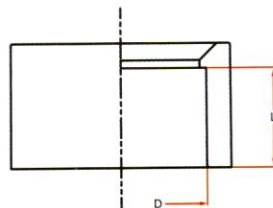
11) Female Slip Adaptor ; BSP female thread/male plain socket

Size	D	L	PN
20 x 1/2"	20.1	16.0	16
25 x 3/4"	25.1	19.0	16
32 x 1"	32.1	22.0	16
40 x 1 1/4"	40.1	26.0	16
50 x 1 1/2"	50.1	31.0	16
63 x 2"	63.1	38.0	16



12) Socket

Size	D	L	PN
20 mm	20.1	16.0	16
25 mm	25.1	19.0	16
32 mm	32.1	22.0	16
40 mm	40.1	26.0	16
50 mm	50.1	31.0	16
63 mm	63.1	38.0	16
75 mm	75.1	44.0	16
90 mm	90.1	51.0	16
110 mm	110.1	61.0	16
160 mm	160.2	86.0	16
200 mm	200.2	106.0	10



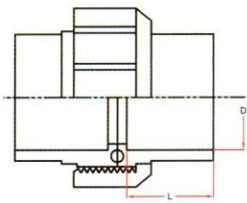
13) Reducer Bush

Size	D	L	PN
25 x 20mm	25.1	19.0	16
32 x 20mm	32.1	22.0	16
32 x 25mm	32.1	22.0	16
40 x 20mm	40.1	26.0	16
40 x 25mm	40.1	26.0	16
40 x 32mm	40.1	26.0	16
50 x 20mm	50.1	31.0	16
50 x 25mm	50.1	31.0	16
50 x 32mm	50.1	31.0	16
63 x 20mm	63.1	38.0	16
63 x 25mm	63.1	38.0	16
63 x 32mm	63.1	38.0	16
63 x 50mm	63.1	38.0	16
75 x 50mm	75.1	44.0	16
75 x 63mm	75.1	44.0	16
90 x 32mm	90.1	51.0	16
90x 50mm	90.1	51.0	16
90x 63mm	90.1	51.0	16
90x 75mm	90.1	51.0	16
110 x 90mm	110.1	61.0	16
110 x 63mm	110.1	61.0	16
160 x 90mm	160.2	86.0	16
160 x 110mm	160.2	86.0	16
200 x 160mm	200.2	106.0	10
225 x 160mm	225.3	119.0	16



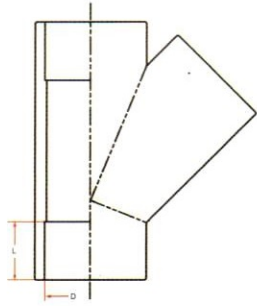
UPVC MILLIMETER SIZE PRESSURE PIPES AND FITTINGS

(DIN 8063 ; PN-16)



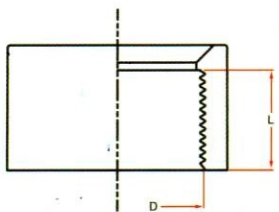
15) Unions socket type

Size	D	L	PN
20 mm	20.10	16.0	16
25 mm	25.10	19.0	16
32 mm	32.10	22.0	16
40 mm	40.10	26.0	16
50 mm	50.10	31.0	16
63 mm	63.10	38.0	16
75 mm	75.10	44.0	16
90 mm	90.10	51.0	16
110 mm	110.10	61.0	16



16) WYE 45°

Size	D	L	PN
20 mm	20.1	16.0	16
25 mm	25.1	19.0	16
32 mm	32.1	22.0	16
40 mm	40.1	26.0	16
50 mm	50.1	31.0	16
63 mm	63.1	38.0	16
75 mm	75.1	44.0	16
90 mm	90.1	51.0	16
110 mm	110.1	61.0	16
160 mm	160.2	86.0	16



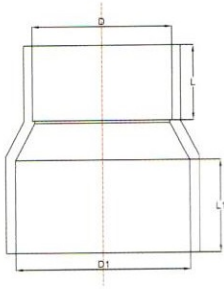
17) Female Reducer Bush ; BSP female thread

Size	D	L	PN
25 x 1/2"	25.1	19.0	16
32 x 1/2"	32.1	22.0	16
32 x 3/4"	32.1	22.0	16



UPVC MILLIMETER SIZE PRESSURE PIPES AND FITTINGS

(DIN 8063 ; PN-16)



19) Reducing Socket

Size	D1 / D	L1 / L	PN
200 x 160mm	200.2 / 160.2	106.0 / 86.0	10

