

Loadbank 200

800A Fuse Switch Panel Boards

Outgoing devices up to 200A

Key Features

The Loadbank 200 range is a modular panel board system designed to fulfil the need for fuse switch panel boards that need up to 800A incoming devices and up to 200A outgoing devices.

Panel boards are available in either a 6 or 10 TP&N outgoing ways with Form 2b Type 2 as standard. Form 4a Type 2 can be achieved with shielding available as an optional accessory.

Several incoming options are available from 200A to 800A and a comprehensive range of metering facilities is available for compliance with the Building Regulations Part L2.

A variety of add-on enclosures is available to complement this range, including MCB distribution boards, general purpose enclosures and cableways to allow for metering and surge protection devices.

The standard finish is epoxy powder coating in light grey RAL 7035.

Compliance

Switch Fuse Panel Boards EN 61439-1
Fuse switches EN 60947-3

Busbar

The Loadbank 200 fuse switch panel board has an ASTA certified short circuit rating of 50kA for 1 second.

PAGE 12

Outgoing Ways

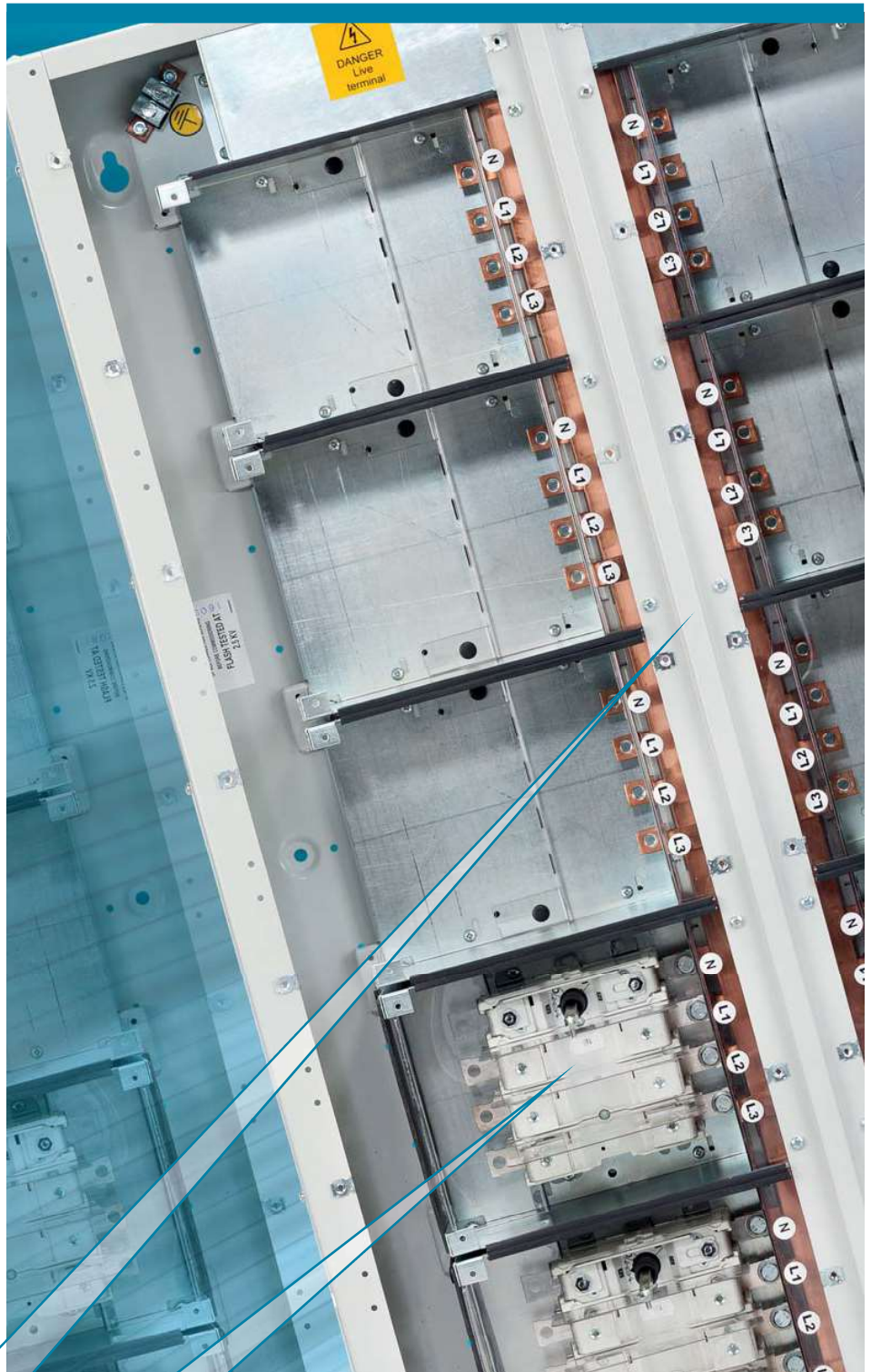
These boards are available with either 6 or 10 outgoing fuse switch ways to house skeleton fuse switches up to 200A.

PAGE 12

Incoming Options

Our Loadbank 200 fuse switch panel board system can house either a 400A, 630A or 800A fuse switch by selecting the required add-on incoming enclosure. Add-on incoming enclosures are supplied with all necessary copper connections and fully shrouded incoming terminations. For 200A incoming option you can install a 200A fuse switch in a spare outgoing way with no need for an additional add-on enclosure.

PAGE 12





Form

The Loadbank 200 fuse switch panel board is Form 2 as standard. This can easily be increased to Form 4 with optional shielding fitted.

PAGE 12

Ingress Protection

As standard these fuse switch panel boards have an ingress protection of IP4X as standard.

PAGE 12

Add-on Enclosures

The Loadbank 200 range is flexible and modular with standard width and depths for add-on enclosures. Our extensive add-on enclosure options for this range include; SP&N MCB distribution boards, TP&N MCB distribution boards, general purpose enclosures, side cableways, service centres, surge protection and incoming and outgoing metering.

PAGE 14

Surge Protection

Both Type I Class I and Type II Class II surge protection options are available for this range in either a specially designed 2 module high side cableway or as a mounting frame to be installed within a side cableway depending on application.

PAGE 16

Metering

By using side cableways and metering door kits this range can easily have DIN96 panel mounted metering added for incoming and outgoing ways. A range of pre-cut wiring looms are available and the current transformers can be installed within the cableways for neatness of installation.

PAGES 15-19

Loadbank 200

Fuse Switch Panel Boards

800A Form 2 & 4 50kA for 1 second



Fuse Switch Panel Boards

800A Form 4a Type 2 (with shielding)

50kA for 1 second

Main features

- Certified at 50kA for 1 second
- Form 2b, Type 2 as standard
- Form 4a Type 2 achieved with optional shielding fitted
- IP4X as standard
- Integral incoming option available using 200A fuse switch in an available outgoing way
- Width is 750mm and depth is 200mm. Height as per table below.

Outgoing Triple Pole Ways	Modular Height	Height (mm)	Weight (kg)	Panel Board Product Code
6	5	760	59	LF806A
10	8	1216	98	LF810A

Add-on Incoming Device Enclosures

- Supplied with all necessary copper connections to connect incoming device to the busbar system
- Incoming terminations are fully shrouded
- Supplied with two side plates and the end plate from the panel board can be used as the bottom plate
- IP4X Ingress Protection
- Incoming device to be ordered separately

Current Rating (A)	Modular Height	Height (mm)	Weight (kg)	Incoming Device Type	Product Code
400	5	762	48.50	L frame fuse switch	LFIF4A
630 / 800	6	914	66.50	N frame fuse switch	LFIF8A

Incoming Device Options

- Exceeds the requirements of EN 60947-3
- 80kA rms fused short-circuit capacity
- AC23A Utilisation category
- Full uninterrupted duty
- 415V AC rated voltage

Current Rating (A)	No of Poles	Max. cable termination (mm ²)	Product Code	Enclosure required	Cable Terminals (if required)
400	TP&N	300	SL3P400N	LFIF4A	N/A
400	4 Pole	300	SL4P400	LFIF4A	N/A
630	TP&N	630	SN3P630N	LFIF8A	SNCET
630	4 Pole	630	SN4P630	LFIF8A	SNCET
800	TP&N	630	SN3P800N	LFIF8A	SNCET
800	4 Pole	630	SN4P800	LFIF8A	SNCET

Fuse Switch Panel Board Accessories

Description	Product Code
Form 4 shielding for cable up to 70mm ² (1 required per device)	LFS41A
Form 4 shielding for cable up to 150mm ² (1 required per device)	LFS42A
Panel Board vertical stacking kit	LCFVK
Blank cover for fuse switch handle	LFXHBA
Spare End Plate	LGES

Fuse Switch Panel Boards Outgoing Devices

63A to 200A Skeleton Switches

- Exceeds the requirements of EN 60947-3
- 80kA rms fused short circuit capacity
- AC23A Utilisation Category
- Full uninterrupted duty
- 415V AC rated voltage

*All outgoing Skeleton fuse switches are supplied without fuses. Solid links for isolation are available as an optional accessory.

Current Rating (A)	3-pole Product Code	4-pole Product Code
63	SF3P63N	SF4P63
100	SF3P100N	SF4P100
125	SF3P125N	SF4P125
160	SF3P160N	SF4P160
200	SF3P200N	SF4P200

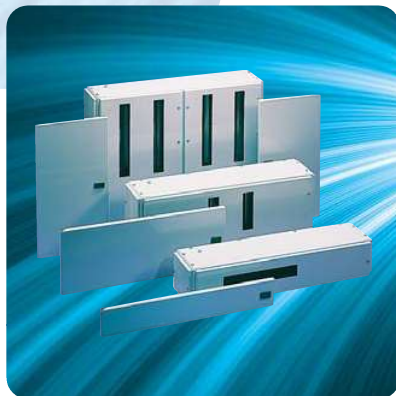
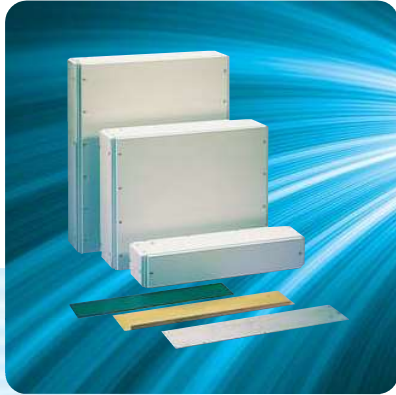
Accessories for Incoming and Outgoing Skeleton Switches

Description	Current Rating (A)	Product Code
Solid Links		
Sold Link (1 required per phase)	63	HFL63
Solid Link (1 required per phase)	100 to 200	HFL200A
Solid Link (1 required per phase)	315 and 400	HLL400
Solid Link (1 required per phase)	630 and 800	HNL800
Terminal Shrouds and Barriers		
Terminal Shroud and barriers	63 to 200	SFTSS
Terminal Shroud and barriers	400	SLTS
Terminal Shroud and barriers	630 and 800	SNTS
Terminal Barrier (Set of 3)	63 to 200	SFTB
Terminal Barrier (Set of 3)	400	SLTB
Terminal Barrier (Set of 3)	630 and 800	Supplied as standard
Extension Terminals		
Cable extension terminals (Set of 8)	630 and 800	SNCET
Auxiliary Switches		
2 Bank Auxiliary Switch	63 to 200	SAUX2F
4 Bank Auxiliary Switch	63 to 200	SAUX4F
2 Bank Auxiliary Switch	400 to 800	SAUX2N
4 Bank Auxiliary Switch	400 to 800	SAUX4N
6 Bank Auxiliary Switch	400 to 800	SAUX6N

Loadbank 200 Fuse Switch Panel Boards 800A Form 2 & 4 50kA for 1 second



Loadbank 200 Fuse Switch Panel Boards 800A Form 2 & 4 50kA for 1 second



Fuse Switch Panel Boards Add-on enclosures

General Purpose Enclosures

- IP4X Ingress Protection
- Enclosures are 750mm wide and 200mm deep. Height as per table below.
- Supplied with two side and two end plates as standard
- Replacement top / bottom plate is product code LGES
- Replacement side plate is product code MXPE*F where the * represents the modular height
- Can be mounted above or below main panel board as required

Modular Height	Height (mm)	Weight (kg)	Product Code
1	152	4	LEBM1
2	305	10	LEBM2
3	457	16	LEBM3
4	609	22	LEBM4
5	762	28	LEBM5
6	914	34	LEBM6

Side Cableway Extension Enclosures

- IP4X Ingress Protection
- Recommended for cables over 70mm²
- Enclosures are 250mm wide and 200mm deep. Height as per table below.
- No side plates supplied as designed to use the side plate from the panel board
- Can be used with Cableway Metering Door Kits for panel mounted metering options

Cableway Metering Door Kits

- For incoming and outgoing panel mounted metering
- Metering door kit designed to be used with standard cableway
- Includes DIN-rail for mounting fuses and Current Transformers within cableway
- Meters, Current Transformers and wiring looms not supplied

Modular Height	Height (mm)	Weight (kg)	Cableway Product Code	Cableway Metering Door Kit (if required)
1	152	2	LECM1	N/A
2	305	4	LECM2	LECMD2
3	457	6	LECM3	LECMD3
4	609	8	LECM4	LECMD4
5	762	10	LECM5	LECMD5
6	914	12	LECM6	LECMD6
8	1219	14	LECM8	LECMD8

MCB Distribution Boards and Service Centres

- IP3X as standard and IP4X with doors fitted
- MCB Distribution boards have fully shielded busbars and interconnections
- Space saving twin option TP&N Distribution board option

Description	Modular Height	Height (mm)	Weight (kg)	Product Code	Door Kit Product Code
17 Way SP&N Distribution Board	1	152	15	LDS17	LD1DS
6 Way TP&N Distribution Board	2	305	23	LDT106X	LD1D06X
12 Way TP&N Distribution Board	3	457	30	LDT112X	LD1D12X
2 x 12 Way TP&N Distribution Board	4	609	35	LDT212X*	LD2D12X
24 Way Modular Service Centre	1	152	10	LDS24	LD1DS

* Only double module RCBOs can be fitted in this enclosure

Fuse Switch Panel Boards Meters and Current Transformers

Loadbank 200 Fuse Switch Panel Boards 800A Form 2 & 4 50kA for 1 second

Panel Mounted Meters - Incoming and Outgoing

- Fully programmable CT ratios
- Modbus and Pulse Plug-in communication modules available for Ci1 and Ci3 meters as an optional extra
- Integra 1630 meters with built in communication modules

Meter Type	Outputs	Product Code	Modbus Module	Pulse Module
Digital kWh Meter	None	Ci1-01	MOD-01	PUL-01
Digital Multi-function Meter	None	Ci3-01	MOD-01	PUL-01
Digital Multi-function Meter	Pulse & Modbus	Ci5-01	Standard	Standard
Digital Multi-function Meter	Pulse & Modbus	INT-1630-M-5-M-110	Standard	Standard



Single Current Transformers - Incoming

- Up to Class 0.5 accuracy
- System voltage up to 720V
- Secondary output to Meter of 5A
- Operating temperature of -20°C to +70°C
- Three single CTs required per incoming meter
- For use with Ci1-01, Ci3-01 and Integra 1630 panel mounted meters

Case Size	Current Rating (A)	Maximum Cable size (mm ²)	Product Code
400A Single CT	400	32	M63N-400/5
600A Single CT	600	32	M63N-600/5
800A Single CT	800	42	M93L-800/5

Note: M93L-800/5 is for use with LF1F8A enclosure and 800A fuse switch only.



3-in-1 Current Transformers - Outgoing

- Up to Class 0.5 accuracy
- System voltage up to 720V
- Secondary output to Meter of 5A
- Operating temperature of -20°C to +70°C
- One required per outgoing meter

Case Size	Current Rating (A)	Maximum Cable size (mm ²)	Product Code for use with Ci1, Ci3 and INT-1630 Meters	Product Code for use with Ci5 Q2C Meter
3-in-1 CT Core Size 35mm	100	95	M3NI-35-100/5	QC3NI-35-100/5
3-in-1 CT Core Size 35mm	125	95	M3NI-35-125/5	QC3NI-35-125/5
3-in-1 CT Core Size 35mm	160	95	M3NI-35-160/5	QC3NI-35-160/5
3-in-1 CT Core Size 35mm	200	95	M3NI-35-200/5	N/A
3-in-1 CT Core Size 35mm	250	95	M3NI-35-250/5	QC3NI-35-250/5



Loadbank 200

Fuse Switch Panel Boards

800A Form 2 & 4 50kA for 1 second



Fuse Switch Panel Boards

Surge Protection

Surge Suppression Device Mounting

There are two different ways of providing surge protection for the Loadbank 200 Panel Board range and both options are offered with Type I and Type II surge protection devices.

Option 1: 2 module high cableway complete with surge protection device

Option 2: Frame for mounting the surge protection device in a cableway larger than 2 modules high

Type I Class I Surge Suppression Device

- Three-phase & neutral, 25kA L-N, 100kA surge protector
- Maximum continuous operating voltage (Uc) is 275V AC rms
- Lightning impulse current 10/350ms, L-N (Iimp) is 25kA
- Lightning impulse current 10/350ms, N-PE (Iimp) is 100kA
- Total lightning impulse current 10/350ms, L1, L2, L3, N-PE (Itotal) is 100kA

Device Series	Mounting Option	Method of Mounting	Product Code
DSPT	Option 1	2 Module cableway complete with DSPT3PN Surge Suppression Device	LECM2SP
DSPT	Option 2	Frame for mounting inside a cableway complete with DSPT3PN Surge Suppression Device	LECM2SM

Type II Class II Surge Suppression Device

- Two stage (redundant) protection with pre-failure indication
- Maximum continuous operating voltage (Uc) L-N is 300V rms and L-L is 500V rms
- Maximum surge current (8/20ms) (Imax) is 30kA per phase
- Leakage current to earth is 600mA

Device Series	Mounting Option	Method of Mounting	Product Code
DSPE	Option 1	2 Module cableway complete with DSPE600R Surge Suppression Device	LECK2SP
DSPE	Option 2	Frame for mounting inside a cableway complete with DSPE600R Surge Suppression Device	LECK2SM

NOTE: It is recommended that Surge Protection devices are fed by a 63A Type C MCB, 63A MCCB or 63A fused disconnector to provide isolation and protection.

Fuse Switch Panel Boards Wiring Looms

Loadbank 200 Fuse Switch Panel Boards 800A Form 2 & 4 50kA for 1 second

Wiring Looms for use with Ci1, Ci3 and INT-1630 Meters - Incoming and Outgoing

Metering Harnesses

- 1 x LBWP Fused voltage tap off loom required per cableway for outgoing meters
- 1 x LBWI Fused voltage tap off loom required for incoming meter
- Fuse to Voltage loom LBWM6 required for up to six outgoing meters and 2 x LBWM6 looms required for 6 to 12 outgoing meters
- CT to Meter Loom LBWCT required for each outgoing meter

Description	Product Code
Fused Voltage Tap Off Loom	LBWP
Fuse to Voltage loom for Incoming meter	LBWI
Fuse to Voltage loom for up to 6 outgoing meters	LBWM6
CT to Meter Loom	LBWCT



Wiring Looms for use with Ci5 Q2C - Incoming Meter

Metering Harnesses

- 1 x LBWIQC Fused voltage tap off loom required for a single incoming meter
- Fuse to Voltage loom QCFV-02 required
- CT to Meter Loom QCMCTO-01 required

Description	Product Code
Fused Voltage Tap Off Loom	LBWIQC
Fuse to Voltage Loom	QCFV-02
CT to Meter Loom	QCMCTO-01



Wiring Looms for use with Ci5 Q2C - Outgoing Meter

Metering Harnesses

- 1 x LBWPQC Fused voltage tap off loom required per cableway for outgoing meters
- Fuse to Voltage loom QCFV-02 required for the first outgoing meter in each cableway
- Each additional outgoing meter will require a Voltage to Voltage Loom QCVV-01 in order to "daisy chain" the voltage from the first meter to the last meter
- CT to Meter Loom QCCTM-04 required for each outgoing meter

Description	Product Code
Fused Voltage Tap Off Loom	LBWPQC
Fuse to Voltage loom	QCFV-02
CT to Meter Loom	QCCTM-04
Voltage to Voltage Loom	QCVV-01



Please see our Metering Selection Charts in the following pages which detail all of the parts required in order to correctly meter the Loadbank 200 Panel Board Range

Loadbank 200

Fuse Switch Panel Boards

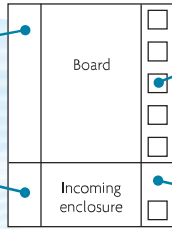
800A Form 2 & 4 50kA for 1 second

Step 1: Select Panel Board

Step 2: Select incoming enclosure and incoming device

Step 3: Select matching cableways and cableway metering door kits as required

Cableways and metering door kits can be fitted to left hand side of extra cabling room and metering



Side cableway with metering door kit fitted for outgoing meters

Cableway and door kit for incoming meter

Step 4: Select voltage tap off loom

Step 5: Select Meter

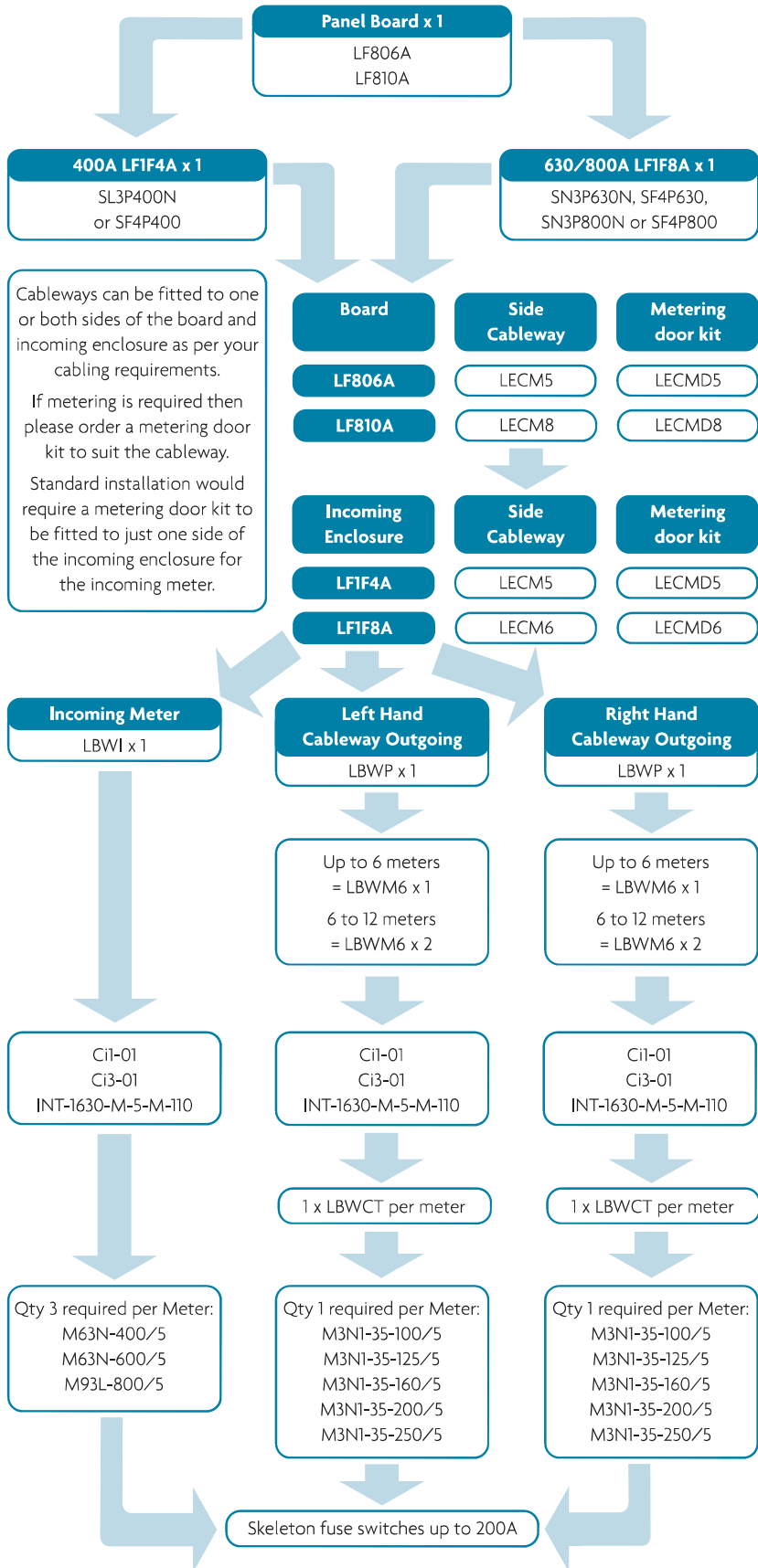
Step 6: Select CT to Meter Loom

Step 7: Select CT

Step 8: Select outgoing devices

Metering Selection Chart

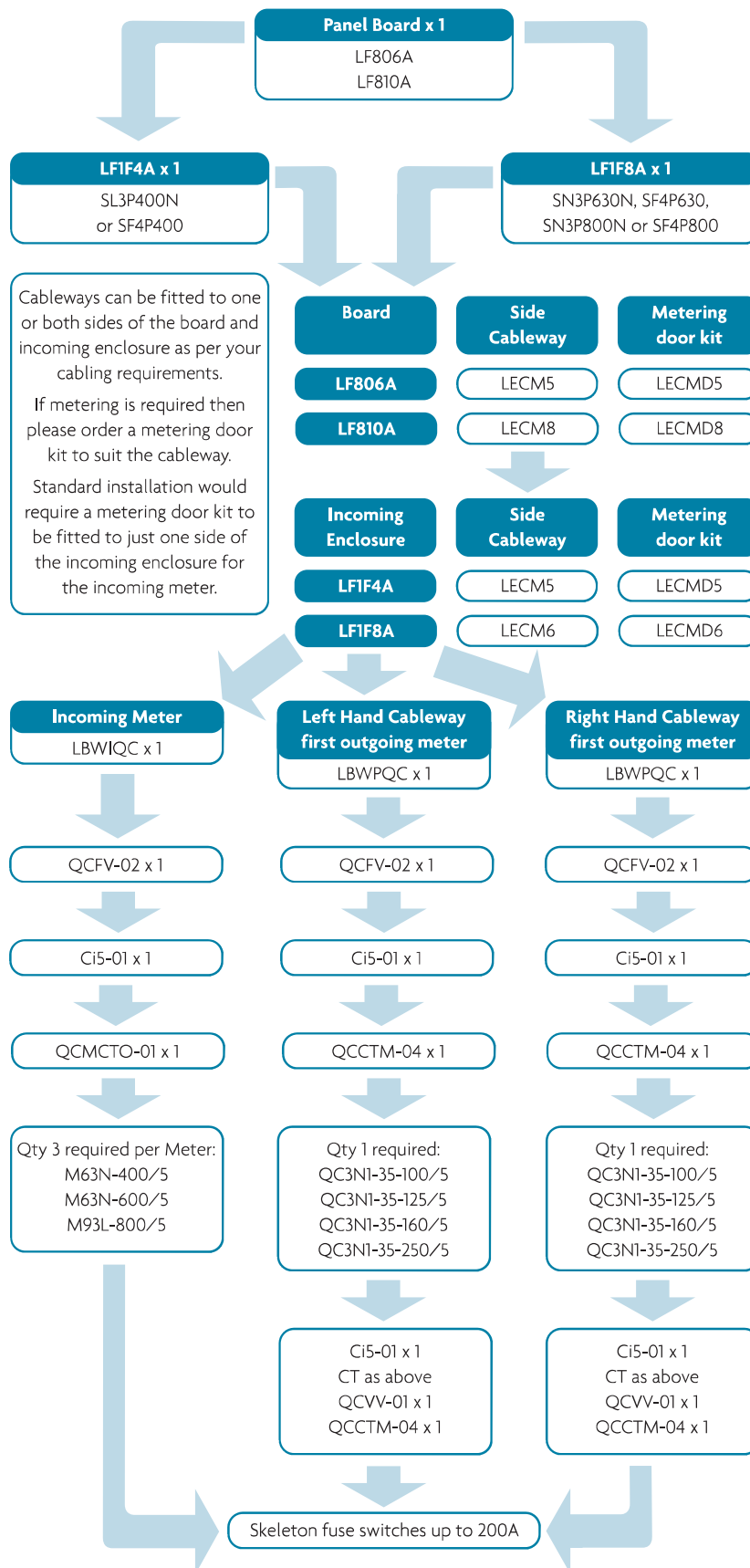
Ci1, Ci3 and INT-1630 Meters



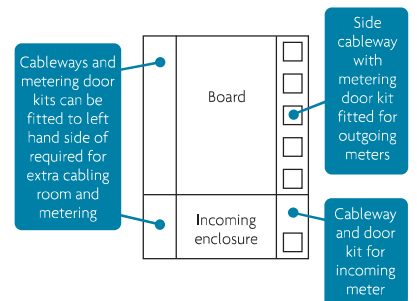
Metering Selection Chart

Ci5 Q2C Meter

Loadbank 200
Fuse Switch Panel Boards
800A Form 2 & 4 50kA
for 1 second



- Step 1:** Select Panel Board
- Step 2:** Select incoming enclosure and incoming device
- Step 3:** Select matching cableways and cableway metering door kits as required



- Step 4:** Select voltage tap off loom
- Step 5:** Select fuse to voltage loom
- Step 6:** Select Meter
- Step 7:** Select CT to Meter Loom
- Step 8:** Select CT
- Step 9:** Select products for additional meters
- Step 10:** Select outgoing devices

Loadbank 250

400A and 800A MCCB Panel Boards, Outgoing devices up to 250A

Key Features

The Loadbank 250 modular enclosure system is engineered to provide the unrivalled flexibility and build simplicity needed in order to produce a wide range of power distribution solutions. It consists of TP&N busbars of 400A and 800A with three different sizes of 6, 12 or 18 outgoing ways.

This range houses the incoming and outgoing devices in separate adjoining enclosures which then allows the widest range of possible circuit permutations, including oversized outgoing circuits, which can then be accommodated within a common format.

Incoming options range from 250A MCCBs to 800A switch fuses depending on the board. There is a single frame size MCCB for outgoing devices which is the YB3 frame MCCB up to 250A.

The standard finish is epoxy powder coating in light grey RAL 7035.

Compliance

Panel Boards	EN 61439-1
MCCBs	EN 60947-2

Busbar

The Loadbank 250 panel boards have an ASTA certified busbars with a short-circuit withstand rating of 36kA for 1 second for the 400A boards and 50kA for 1 second for the 800A boards.

PAGES 22-24

Outgoing Ways

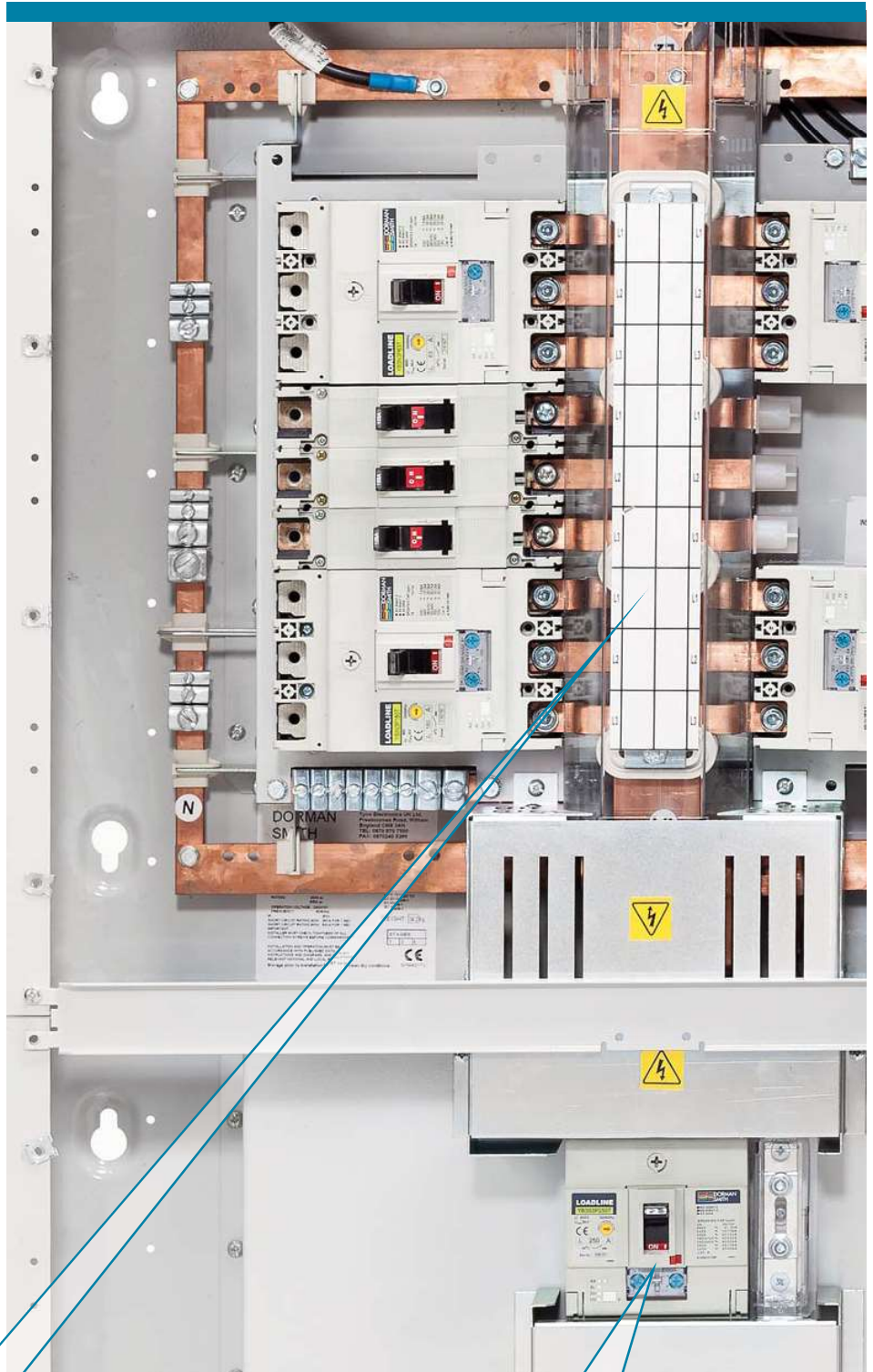
Both the 400A and 800A panel board versions are available with 6, 12 or 18 triple-pole outgoing ways.

PAGES 22-24

Incoming Options

There is a variety of incoming options for this range including: MCCBs and switch disconnectors up to 800A, fuse switches up to 800A and direct connection. Each incoming device has a matching add-on incoming enclosure which includes all necessary copper connections for installation.

PAGES 22-24





Form

The Loadbank 250 panel boards are available as Form 3a as standard, however we also produce a specialised Form 4a Type 2 panel board with 6 or 10 outgoing triple-pole ways.

PAGES 22-24

Ingress Protection

As standard the MCCB panel boards in this range have an ingress protection of IP3X and IP4X with the optional extra door kit fitted.

PAGES 22-24

Add-on Enclosures

The Loadbank 250 range is flexible and modular with standard width and depths for add-on enclosures. Our extensive add-on enclosure options for this range include; SP&N MCB distribution boards, TP&N MCB distribution boards, general purpose enclosures, side cableways, service centres, surge protection and incoming and outgoing metering.

PAGE 27

Surge Protection

Both Type I Class I and Type II Class II surge protection options are available for this range in either a specially designed 2 module high side cableway or as a mounting frame to be installed within a side cableway depending on application.

PAGE 29

Metering

By using side cableways and metering door kits this range can easily have DIN96 panel mounted metering added for incoming and outgoing ways. A range of pre-cut wiring looms are available and the current transformers can be installed within the cableways for neatness of installation.

PAGES 28-36

Outgoing Devices

The outgoing ways are supported by a single device frame size up to 250A which is our Loadline YB3 MCCBs. These are available in single-pole and triple-pole versions and also as four-pole versions for the Loadbank Form 4 panel board. A range of accessories are available for the Loadline MCCBs to meet your specific requirements.

PAGES 25-26

Loadbank 250 400A MCCB Panel Boards, Outgoing devices up to 250A



Fitted with incoming housing and metering



MCCB Panel Boards 250A/400A Form 3a 36kA for 1 second

Main Features

- ASTA certified busbars rated at 36kA for 1 second
- Form 3a as standard
- Width is 750mm and depth is 200mm. Height as per the table below.
- Supplied with top plate and two side plates as standard
- Ingress protection of IP3X. IP4X with door kit fitted (available as optional extra)

Outgoing Triple Pole Ways	Modular Height	Height (mm)	Weight (kg)	Panel Board Product Code	Door Kit Product Code
6	4	609	36	LB406YA3	LBDD06
12	6	914	52	LB412YA3	LBDD12
18	8	1219	66	LB418YA3	LBDD18

Add-on Incoming Device Enclosures

- Supplied with all necessary copper connections to connect incoming device to the busbar system
- Supplied with two side plates and one end plate as standard
- Incoming device to be ordered separately
- YA3NL Neutral link to be ordered as an optional accessory if required with the LB1YA3 enclosure

Current Rating (A)	Modular Height	Height (mm)	Weight (kg)	Incoming Device Type	Product Code
250	3	457	26	YB3 frame MCCB	LB1YA3
400	5	762	45	Y6 frame MCCB	LB1Y6
400	2	305	18	Direct connection	LBDR4
200	3	457	37.5	F frame fuse switch	LB1F2A
400	5	762	48.5	L frame fuse switch	LB1F4A

Incoming Device Options

Current Rating (A)	No of Poles	Device Type	Product Code	Enclosure required
160	3	MCCB	YB3N3P160T	LB1YA3
200	3	MCCB	YB3N3P200T	LB1YA3
250	3	MCCB	YB3N3P250T	LB1YA3
250	3	Switch disconnecter	YB3B3P250D	LB1YA3
160	4	MCCB	YB3N4P160T	LB1YA3
200	4	MCCB	YB3N4P200T	LB1YA3
250	4	MCCB	YB3N4P250T	LB1YA3
250	4	Switch disconnecter	YB3B4P250D	LB1YA3
400	3	MCCB	Y6H3P400T5	LB1Y6
400	3	Switch disconnecter	Y6B3P400D	LB1Y6
400	4	MCCB	Y6H4P400T5	LB1Y6
400	4	Switch disconnecter	Y6B4P400D	LB1Y6
200	3	F frame fuse switch	SF3P200N	LB1F2A
200	4	F frame fuse switch	SF4P200	LB1F2A
400	3	L frame fuse switch	SL3P400N	LB1F4A
400	4	L frame fuse switch	SL4P400	LB1F4A

Panel Board Accessories

Description	Product Code
3 pole blanking plate	LBBP3PYA3
Spare End Plate	LGES
Cylinder Door Lock	DBXCL
Padlocking Door Kit	DBXPL
Panel board stacking kit	LBCK4
Busbar extension terminals	LBSKE

MCCB Panel Boards

800A Form 3a 50kA for 1 second

Loadbank 250

800A MCCB

Panel Boards, Outgoing devices up to 250A

Panel Boards

- ASTA certified busbars rated at 50kA for 1 second
- Form 3a as standard
- Width is 750mm and depth is 200mm. Height as per the table below.
- Supplied with top plate and two side plates as standard
- Ingress protection of IP3X. IP4X with door kit fitted (available as optional extra)

Outgoing Triple Pole Ways	Modular Height	Height (mm)	Weight (kg)	Panel Board Product Code	Door Kit Product Code
6	4	609	42	LB806YA3	LBDD06
12	6	914	62	LB812YA3	LBDD12
18	8	1219	78	LB818YA3	LBDD18

Add-on Incoming Device Enclosures

- Supplied with all necessary copper connections
- Neutral links supplied as standard
- Incoming device to be ordered separately

Current Rating (A)	Modular Height	Height (mm)	Weight (kg)	Incoming Device Type	Product Code
400/630	5	762	45	Y6 frame MCCB	LB1Y6
800	3	457	23	Direct Connection	LBDR8
800	6	912	69	Y7 frame MCCB	LB1Y7

Incoming Device Options

Current Rating (A)	No of Poles	Device Type	Product Code	Enclosure required
630	3	MCCB	Y6H3P630T5	LB1Y6
630	3	Switch disconnecter	Y6B3P630D	LB1Y6
630	4	MCCB	Y6H4P630T5	LB1Y6
630	4	Switch disconnecter	Y6B4P630D	LB1Y6
800	3	MCCB	Y7J3P1000E*	LB1Y7
800	3	Switch disconnecter	Y7B3P800D	LB1Y7
800	4	MCCB	Y7J4P1000E*	LB1Y7
800	4	Switch disconnecter	Y7B4P800D	LB1Y7

* MCCB must be set at 800A maximum

Panel Board Accessories

Description	Product Code
3 pole blanking plate	LBBP3PYA3
Spare End Plate	LGES
Cylinder Door Lock	DBXCL
Padlocking Door Kit	DBXPL
Panel board stacking kit	LBCK8
Busbar extension terminals	LBSKE

Twin YA5 Outgoing Housing (not designed for use with Form 4 panel boards)

- Can be mounted direct to incoming enclosure without connection kit
- When mounting to 800A panelboard connection kits are required (LBSKE and LBCK8)
- Cableway extension enclosures are necessary to assist with cabling
- Devices to be ordered separately
- Optional outgoing terminal shroud YA5TS3P if required (1 per MCCB)
- YA5 MCCB busbar terminal cover not required, however if internal degree of protection required is greater than IP22X then terminal cover YA5TC3P required (1 per MCCB)

Description	Modular Height	Height (mm)	Weight (kg)	Product Code	Door Kit Product Code
Twin YA5 (400A max each)	3	456	35	LB802YA5	LBDD02
Castell Kit (Excl. locks)				LB802CLK	
Castell Lock Type K Series Form 1, 6-4mm bolt protrusion					



Loadbank 250 800A MCCB Panel Boards, Outgoing devices up to 250A



* Neutral link supplied with enclosure



MCCB Panel Boards 800A Form 4 50kA for 1 second

Panel Boards

- ASTA certified busbars rated at 50kA for 1 second
- Form 3a Type 2 as standard and Form 4a Type 2 with optional shielding fitted
- Outgoing device is 3 pole YB3 frame MCCB with neutral link (available separately under product code YA3NL) or 4 pole YB3 frame MCCB
- Exceeds the requirements of EN 61439-1
- IP4X Ingress protection with doors fitted
- Fully rated neutrals
- Panel board does not accept 1 pole outgoing devices
- Panel board width is 750mm and depth is 200mm. Height is as per table below.

Outgoing Triple Pole Ways	Modular Height	Height (mm)	Weight (kg)	Panel Board Product Code	Door Kit Product Code
6	5	760	59	LF806YA	MXD06
10	8	1216	98	LF810YA	MXD10

Add-on Incoming Device Enclosures

- Form 4 as standard
- Incoming device to be ordered separately

Current Rating (A)	Modular Height	Height (mm)	Weight (kg)	Incoming Device Type	Product Code	Connection Kit
400	5	762	35	L frame fuse switch	LF1F4A	Not required
630/800	6	914	47	N frame fuse switch	LF1F8A	Not required
400 to 800	5	762	45.2	Y6 frame MCCB / Switch disconnecter	MMS15Y*	MCFMY6

Incoming Fuse Switch Device Options

Current Rating (A)	No of Poles	Frame size	Max. cable termination (mm ²)	Product Code	Enclosure required
400	TP&N	L	240	SL3P400N	LF1F4A
400	4	L	240	SL4P400	LF1F4A
630	TP&N	N	630	SN3P630N	LF1F8A
630	4	N	630	SN4P630	LF1F8A
800	TP&N	N	630	SN3P800N	LF1F8A
800	4	N	630	SN4P800	LF1F8A

Incoming MCCB Device Options

- 3 Pole and 4 pole MCCBs have adjustable thermal and instantaneous trip

Current Rating (A)	No of Poles	Device Type	Max. cable termination (mm ²)	Product Code	Enclosure required
400	3	Switch disconnecter	240	Y6B3P400D	MMS15Y*
400	3	MCCB	240	Y6H3P400T5	MMS15Y*
630	3	MCCB	240	Y6H3P630T5	MMS15Y*
800	3	MCCB	240	Y6H3P800T5	MMS15Y*
400	4	Switch disconnecter	240	Y6B4P400D	MMS15Y*
400	4	MCCB	240	Y6H4P400T5	MMS15Y*
630	4	MCCB	240	Y6H4P630T5	MMS15Y*
800	4	MCCB	240	Y6H4P800T5	MMS15Y*

Panel Board Accessories

Description	Product Code
Form 4 shielding for cables up to 70mm ²	LFS41YA
Form 4 shielding for outgoing cables up to 150mm ²	LFS42YA
Vertical stacking kit	LCFVK
Blanking plate for unused outgoing way	YA3F4BP

MCCB Panel Boards

Outgoing Devices

Loadbank 250
400A and 800A MCCB
Panel Boards, Outgoing
devices up to 250A

Main Features

- Exceeds the requirements of EN 60947-2
- 1 Pole MCCBs have fixed thermal and instantaneous trips
- 3 Pole and 4 Pole MCCBs have both adjustable thermal and instantaneous trips
- Rated insulation voltage is 800V AC
- Standard cable termination is 95mm²
- Maximum cable termination is 150mm² using M8 reduced palm width lugs
- YA3NL Neutral Link for use on Form 4a Type 2 only

Current Rating (A)		YA3 MCCB	YB3 MCCB		YA3 MCCB	
Max (A)	Min (A)	1-pole (fixed)	3-pole (adjustable)	4-pole (adjustable)	3-pole (adjustable)	4-pole (adjustable)
Switch Disconnectors						
250	-	-	YB3B3P250D	YB3B4P250D	YA3B3P250D	YA3B4P250D
Thermal / Magnetic 25kA						
16	16	YA3N1P16T	-	-	-	-
20	13	YA3N1P20T	-	-	YA3N3P20T	YA3N4P20T
32	20	YA3N1P32T	-	-	YA3N3P32T	YA3N4P32T
40	25	YA3N1P40T	-	-	-	-
50	32	YA3N1P50T	YB3N3P50T*	YB3N4P50T*	YA3N3P50T	YA3N4P50T
63	40	YA3N1P63T	YB3N3P63T*	YB3N4P63T*	YA3N3P63T	YA3N4P63T
80	50	YA3N1P80T	-	-	-	-
100	63	YA3N1P100T	YB3N3P100T	YB3N4P100T	YA3N3P100T	YA3N4P100T
125	80	YA3N1P125T	YB3N3P125T	YB3N4P125T	YA3N3P125T	YA3N4P125T
160	100	YA3N1P160T	YB3N3P160T	YB3N4P160T	YA3N3P160T	YA3N4P160T
200	125	-	YB3N3P200T	YB3N4P200T	YA3N3P200T	YA3N4P200T
250	160	-	YB3N3P250T	YB3N4P250T	YA3N3P250T	YA3N4P250T
Thermal / Magnetic 36kA						
50	32	-	YB3S3P50T*	YB3S4P50T*	YA3S3P50T	YA3S4P50T
63	40	-	YB3S3P63T*	YB3S4P63T*	YA3S3P63T	YA3S4P63T
100	63	-	YB3S3P100T	YB3S4P100T	YA3S3P100T	YA3S4P100T
125	80	-	YB3S3P125T	YB3S4P125T	YA3S3P125T	YA3S4P125T
160	100	-	YB3S3P160T	YB3S4P160T	YA3S3P160T	YA3S4P160T
200	125	-	YB3S3P200T	YB3S4P200T	YA3S3P200T	YA3S4P200T
250	160	-	YB3S3P250T	YB3S4P250T	YA3S3P250T	YA3S4P250T
Thermal / Magnetic 65kA						
50	32	-	-	-	YA3J3P50T	YA3J4P50T
63	40	-	-	-	YA3J3P63T	YA3J4P63T
100	63	-	-	-	YA3J3P100T	YA3J4P100T
125	80	-	-	-	YA3J3P125T	YA3J4P125T
160	100	-	-	-	YA3J3P160T	YA3J4P160T
200	125	-	-	-	YA3J3P200T	YA3J4P200T
250	160	-	-	-	YA3J3P250T	YA3J4P250T

YA5 MCCBs for LB802YA5 enclosure

- MCCBs have both adjustable thermal and instantaneous trips
- Standard cable termination is 95mm² or 185mm² using reduced palm width lugs
- For use with LB802YA5 enclosure

Current Rating (A)	25kA 3 Pole Product Code	50kA 3 Pole Product Code
160 to 250A	YA5N3P250T	YA5H3P250T
250A to 400A	YA5N3P400T	YA5H3P400T

* 50A and 63A MCCBs have fixed instantaneous trip



Loadbank 250 400A and 800A MCCB Panel Boards, Outgoing devices up to 250A



MCCB Panel Boards Accessories for outgoing devices

Accessories for YB3 and YA3 MCCB outgoing devices

Description	YB3 3 Pole Product Code	YB3 4 Pole Product Code	YA3 3 Pole Product Code	YA3 4 Pole Product Code
Cable Clamps				
Cable Clamps	YB3CC3P	YB3CC4P	YA3CC3P	YA3CC4P
Terminal Protection				
Terminal Shroud for cable lugs	YB3TS3P	YB3TS4P	YA3TS3P	YA3TS4P
Interphase Barrier (Set of 1)	YB3TB		YA3TB	
Terminal Shroud Cover Lock	YBTSCL		-	-
Dolly lock	YBDL1		YADL1	
Shunt Trips				
Shunt Trip 100-120V AC	YBST120AC		YAST115AC	
Shunt Trip 200-240V AC	YBST240AC		YAST240AC	
Shunt Trip 380-450V AC	YBST450AC		YAST450AC	
Shunt Trip 24V DC	YBST24DC		YAST24DC	
Shunt Trip 48V DC	YBST48DC		-	
Shunt Trip 100-120V DC	YBST120DC		-	
Shunt Trip 200-240V DC	YBST240DC		-	
Under-voltage Release				
Under-voltage release 100-120V AC	YBUVR120AC		YAUVR120AC	
Under-voltage release 200-240V AC	YBUVR240AC		YAUVR240AC	
Under-voltage release 380-450V AC	YBUVR450AC		YAUVR450AC	
Under-voltage release 24V DC	YBUVR24DC		YAUVR24DC	
Under-voltage release 100-120V DC	YBUVR120DC		-	
Under-voltage release 200-240V DC	YBUVR240DC		-	

Accessories for YA5 MCCBs outgoing devices

Description	3 Pole Product Code
Cable Clamps	
Cable Clamps	YA5CC3P
Terminal Protection	
Terminal Shroud for cable lugs	YA5TS3P
Interphase Barrier (Set of 1)	YA5TB
Dolly lock	YA5DL
Shunt Trips	
Shunt Trip 100-120V AC	YAST115AC
Shunt Trip 200-240V AC	YAST240AC
Shunt Trip 380-450V AC	YAST450AC
Shunt Trip 24V DC	YAST24DC
Under-voltage Release	
Under-voltage release 100-120V AC	YAUVR120AC
Under-voltage release 200-240V AC	YAUVR240AC
Under-voltage release 380-450V AC	YAUVR450AC
Under-voltage release 24V DC	YAUVR24DC

MCCB Panel Boards

Add on enclosures

Loadbank 250
400A and 800A MCCB
Panel Boards, Outgoing
devices up to 250A

General Purpose Enclosures

- IP4X Ingress Protection
- Enclosures are 750mm wide and 200mm deep. Height as per table below.
- Supplied with two side and two end plates as standard
- Replacement top / bottom plate is product code LGES
- Replacement side plate is product code MXPE*F where the * represents the modular height
- Can be mounted above or below main panel board as required

Modular Height	Height (mm)	Weight (kg)	Product Code
1	152	4	LEBM1
2	305	10	LEBM2
3	457	16	LEBM3
4	609	22	LEBM4
5	762	28	LEBM5
6	914	34	LEBM6

Side Cableway Extension Enclosures

- IP4X Ingress Protection
- Recommended for cables over 70mm²
- Enclosures are 250mm wide and 200mm deep. Height as per table below.
- No side plates supplied as designed to use the side plate from the panel board
- Can be used with Cableway Metering Door Kits for panel mounted metering options

Cableway Metering Door Kits

- For incoming and outgoing panel mounted metering
- Metering door kit designed to be used with standard cableway
- Includes DIN-rail for mounting fuses and Current Transformers within cableway
- Meters, Current Transformers and wiring looms not supplied

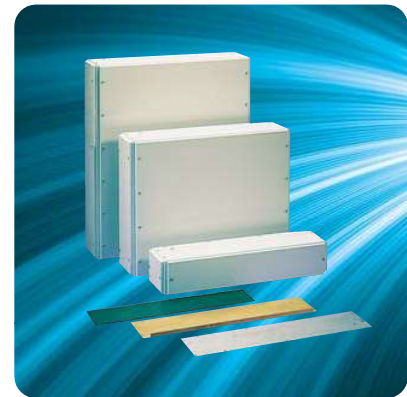
Modular Height	Height (mm)	Weight (kg)	Cableway Product Code	Cableway Metering Door Kit (if required)
1	152	2	LECM1	N/A
2	305	4	LECM2	LECMD2
3	457	6	LECM3	LECMD3
4	609	8	LECM4	LECMD4
5	762	10	LECM5	LECMD5
6	914	12	LECM6	LECMD6
8	1219	14	LECM8	LECMD8

MCB Distribution Boards and Service Centres

- IP3X as standard and IP4X with doors fitted
- MCB Distribution boards have fully shielded busbars and interconnections
- Space saving twin TP&N Distribution board option

Description	Modular Height	Height (mm)	Weight (kg)	Product Code	Door Kit Product Code
17 Way SP&N Distribution Board	1	152	15	LDS17	LD1DS
6 Way TP&N Distribution Board	2	305	23	LDT106X	LD1D06X
12 Way TP&N Distribution Board	3	457	30	LDT112X	LD1D12X
2 x 12 Way TP&N Distribution Board	4	609	35	LDT212X*	LD2D12X
24 Way Modular Service Centre	1	152	10	LDS24	LD1DS

* Only double module RCBOs can be fitted in this enclosure



Loadbank 250 400A and 800A MCCB Panel Boards, Outgoing devices up to 250A



MCCB Panel Boards Meters and Current Transformers

Panel Mounted Meters - Incoming and Outgoing

- Fully programmable CT ratios
- Modbus and Pulse Plug-in communication modules available for Ci1 and Ci3 meters as an optional extra
- Integra 1630 meters with built in communication modules

Meter Type	Outputs	Product Code	Modbus Module	Pulse Module
Digital kWh Meter	None	Ci1-01	MOD-01	PUL-01
Digital Multi-function Meter	None	Ci3-01	MOD-01	PUL-01
Digital Multi-function Meter	Pulse & Modbus	Ci5-01	Standard	Standard
Digital Multi-function Meter	Pulse & Modbus	INT-1630-M-5-M-110	Standard	Standard

Single Current Transformers - Incoming

- Up to Class 0.5 accuracy
- System voltage up to 720V
- Secondary output to Meter of 5A
- Operating temperature of -20°C to +70°C
- Three single CTs required per incoming meter
- For use with Ci1-01, Ci3-01 and Integra 1630 panel mounted meters

Case Size	Current Rating (A)	Maximum Cable size (mm ²)	Product Code
400A Single CT	400	32	M63N-400/5
600A Single CT	600	32	M63N-600/5
800A Single CT	800	42	M93L-800/5

Note: M93L-800/5 is for use with LFIF8A enclosure and 800A fuse switch only.

3-in-1 Current Transformers - Outgoing

- Up to Class 0.5 accuracy
- System voltage up to 720V
- Secondary output to Meter of 5A
- Operating temperature of -20°C to +70°C
- One required per outgoing meter

Case Size	Current Rating (A)	Maximum Cable size (mm ²)	Product Code for use with Ci1, Ci3 and INT-1630 Meters	Product Code for use with Ci5 Q2C Meter
3-in-1 CT Core Size 35mm	100	95	M3N1-35-100/5	QC3N1-35-100/5
3-in-1 CT Core Size 35mm	125	95	M3N1-35-125/5	QC3N1-35-125/5
3-in-1 CT Core Size 35mm	160	95	M3N1-35-160/5	QC3N1-35-160/5
3-in-1 CT Core Size 35mm	200	95	M3N1-35-200/5	N/A
3-in-1 CT Core Size 35mm	250	95	M3N1-35-250/5	QC3N1-35-250/5

MCCB Panel Boards

Surge Protection

Loadbank 250 400A and 800A MCCB Panel Boards, Outgoing devices up to 250A

Surge Suppression Device Mounting

There are two different ways of providing surge protection for the Loadbank 250 Panel Board range and both options are offered with Type I and Type II surge protection devices.

Option 1: 2 module high cableway complete with surge protection device

Option 2: Frame for mounting the surge protection device in a cableway larger than 2 modules high

Type I Class I Surge Suppression Device

- Three-phase & neutral, 25kA L-N, 100kA surge protector
- Maximum continuous operating voltage (Uc) is 275V AC rms
- Lightning impulse current 10/350ms, L-N (Iimp) is 25kA
- Lightning impulse current 10/350ms, N-PE (Iimp) is 100kA
- Total lightning impulse current 10/350ms, L1, L2, L3, N-PE (Itotal) is 100kA

Device Series	Mounting Option	Method of Mounting	Product Code
DSPT	Option 1	2 Module cableway complete with DSPT3PN Surge Suppression Device	LECM2SP
DSPT	Option 2	Frame for mounting inside a cableway complete with DSPT3PN Surge Suppression Device	LECM2SM



Type II Class II Surge Suppression Device

- Two stage (redundant) protection with pre-failure indication
- Maximum continuous operating voltage (Uc) L-N is 300V rms and L-L is 500V rms
- Maximum surge current (8/20ms) (Imax) is 30kA per phase
- Leakage current to earth is 600mA

Device Series	Mounting Option	Method of Mounting	Product Code
DSPE	Option 1	2 Module cableway complete with DSPE600R Surge Suppression Device	LECK2SP
DSPE	Option 2	Frame for mounting inside a cableway complete with DSPE600R Surge Suppression Device	LECK2SM



NOTE: It is recommended that Surge Protection devices are fed by a 63A Type C MCB, 63A MCCB or 63A fused disconnector to provide isolation and protection.